

can-am®



TRAXTER

2025

Product Spec Book for Vehicle Specifications, Accessories and Parts & Maintenance



IF WE SELL IT, WE STAND BY IT.

BRP Limited Warranty* for new Parts, Accessories and Riding Gear

1-year limited warranty**

- Genuine BRP Parts and Accessories installed by you or your authorized BRP dealer
- Aftermarket Products sold through BRP
- Riding Gear

4-year limited warranty**

- Helmets

GET ALL THE DETAILS FROM YOUR CAN-AM OFF-ROAD DEALER

* Purchased at an authorized BRP dealership/distributor or on a BRP-authorized online store. Other exclusions may apply; see complete limited warranty or contact your Can-Am Off-Road authorized dealer. This limited warranty does not apply to factory-installed accessories and Evinrude parts and accessories.

** Unless otherwise stipulated or required by law.

CANAMOFFROAD.COM

© 2024 Bombardier Recreational Products Inc. (BRP). All rights reserved. ®, TM and the BRP logo are trademarks of BRP or its affiliates. In the USA, products are distributed by BRP US Inc. †All other trademarks are the property of their respective owners. BRP reserves the right to discontinue or change specifications, prices, designs, features, models or equipment without incurring obligation. Some models shown may include optional equipment. Product performance may vary depending on external factors. BRP recommends that all SxS drivers take a training course. See your dealer. SxS can be hazardous to operate. Never exceed the SxS's passenger capacity. All SxS models are meant to be used by drivers aged 16 and older. Read the operator's guide. Follow all instructional and safety material and observe applicable laws and regulations. SxS are for off-road use only; never ride on paved surfaces or public roads. For your safety, the operator and passenger(s) must wear a helmet, eye protection and applicable protective clothing. Always remember that riding and alcohol/drugs don't mix. Never engage in stunt driving. Avoid excessive speed and be particularly careful on difficult terrain. Always ride responsibly and safely. See your authorized BRP dealer for details and visit <https://can-am.brp.com/>.



CUSTOMIZING MADE EASY

1

Select the model.

2

Select the package.

3

Customize color, engine, and accessories (or accessory bundles) for your vehicle.

4

Click “Save” or “Send to dealer.”



If you can dream it, you can build it. And ride it. Creating a Can-Am vehicle tailor-made for our riders' needs has never been easier. Scan the QR code and follow the step-by-step above.

**BUILD
YOURS NOW**

TRAXTER



TRAXTER HD7 T

Compass Green



TRAXTER XU HD7 T

Compass Green



TRAXTER HD9 T

Compass Green



TRAXTER XU HD9 T ABS

Compass Green
Dusty Navy



TRAXTER XU HD10 T ABS

Stealth Black

	TRAXTER HD7 T	TRAXTER XU HD7 T	TRAXTER HD9 T	TRAXTER XU HD9 T ABS	TRAXTER XU HD10 T ABS	
ENGINES	Type	52 hp / 42 lb-ft, Rotax® ACE (Advanced Combustion Efficiency) 650 cc single cylinder, liquid cooled, catalytic converter	52 hp / 42 lb-ft, Rotax® ACE (Advanced Combustion Efficiency) 650 cc single cylinder, liquid cooled, catalytic converter	65 hp / 59 lb-ft, Rotax® 976 cc, V-twin, liquid cooled, catalytic converter	65 hp / 59 lb-ft, Rotax® 976 cc, V-twin, liquid cooled, catalytic converter	82 hp / 69 lb-ft, Rotax® 976 cc, V-twin, liquid cooled, catalytic converter
	Fuel Delivery System	Intelligent Throttle Control (ITC™) with Electronic Fuel Injection (EFI)	Intelligent Throttle Control (ITC™) with Electronic Fuel Injection (EFI)	Intelligent Throttle Control (ITC™) with Electronic Fuel Injection (EFI)	Intelligent Throttle Control (ITC™) with Electronic Fuel Injection (EFI)	Intelligent Throttle Control (ITC™) with Electronic Fuel Injection (EFI)
	Transmission	pDrive primary CVT with engine braking and Electronic Drive Belt Protection L / H / N / R / P	pDrive primary CVT with engine braking and Electronic Drive Belt Protection L / H / N / R / P	PRO-TORQ CVT with Quick Response System (QRS), high airflow ventilation and Electronic Drive Belt Protection Extra-L / H / N / R / P	PRO-TORQ CVT with Quick Response System (QRS), high airflow ventilation and Electronic Drive Belt Protection Extra-L / H / N / R / P	PRO-TORQ CVT with Quick Response System (QRS), high airflow ventilation and Electronic Drive Belt Protection Extra-L / H / N / R / P
	Drive Train	Selectable Turf Mode / 2WD / 4WD with Visco-Lok† auto-locking front differential	Selectable Turf Mode / 2WD / 4WD with Visco-Lok† auto-locking front differential	Selectable Turf Mode / 2WD / 4WD with Visco-Lok† auto-locking front differential	Selectable Turf Mode / 2WD / 4WD with open front differential with ABS system	Selectable Turf Mode / 2WD / 4WD with open front differential with ABS system
	Driving Assistance	Electronic Hill Descent Control ECO™ / ECO™ Off / Work modes Speed Limiter	Electronic Hill Descent Control ECO™ / ECO™ Off / Work modes Speed Limiter	Electronic Hill Descent Control ECO™ / ECO™ Off / Work modes Speed Limiter	Electronic Hill Descent Control ECO™ / ECO™ Off / Work modes Speed Limiter	Electronic Hill Descent Control ECO™ / ECO™ Off / Work modes Speed Limiter
	Power Steering	N/A	Dynamic Power Steering (DPS™)	N/A	Dynamic Power Steering (DPS™)	Dynamic Power Steering (DPS™)
SUSPENSIONS	Front Suspension	Double A-arm / 10 in. (25.4 cm) suspension travel	Double A-arm / 10 in. (25.4 cm) suspension travel	Double A-arm / 10 in. (25.4 cm) suspension travel	Arched double A-arm / 11 in. (27.9 cm) suspension travel	Arched double A-arm / 11 in. (27.9 cm) suspension travel
	Front Shocks	Twin tube gas charged shocks	Twin tube gas charged shocks	Twin tube gas charged shocks	Twin tube gas charged shocks	Twin tube gas charged shocks
	Rear Suspension	TTA with external sway bar / 10 in. (25.4 cm) suspension travel	TTA with external sway bar / 10 in. (25.4 cm) suspension travel	TTA with external sway bar / 10 in. (25.4 cm) suspension travel	Arched TTA with external sway bar / 11 in. (27.9 cm) suspension travel	Arched TTA with external sway bar / 11 in. (27.9 cm) suspension travel
	Rear Shocks	Twin tube gas charged shocks	Twin tube gas charged shocks	Twin tube gas charged shocks	Twin tube gas charged shocks	Twin tube gas charged shocks
TIRES / WHEELS	Front / Rear Tires	Maxxis Coronado 2.0† 27 x 9/11 x 14 in.	Maxxis Coronado 2.0† 27 x 9/11 x 14 in.	Maxxis Coronado 2.0† 27 x 9/11 x 14 in.	Maxxis Coronado 2.0† 27 x 9/11 x 14 in.	Maxxis Coronado 2.0† 27 x 9/11 x 14 in.
	Wheels	14 in. steel	14 in. cast-aluminum	14 in. steel	14 in. cast-aluminum	14 in. cast-aluminum
BRAKES	Front	Dual 220 mm disc brakes with hydraulic twin-piston calipers	Dual 220 mm disc brakes with hydraulic twin-piston calipers	Dual 220 mm disc brakes with hydraulic twin-piston calipers	Dual 220 mm disc brakes with hydraulic twin-piston calipers	Dual 220 mm disc brakes with hydraulic twin-piston calipers
	Rear	Dual 220 mm disc brakes with hydraulic single-piston calipers	Dual 220 mm disc brakes with hydraulic single-piston calipers	Dual 220 mm disc brakes with hydraulic single-piston calipers	Dual 220 mm disc brakes with hydraulic single-piston calipers	Dual 220 mm disc brakes with hydraulic single-piston calipers
	Others	Brake holding mechanism	Brake holding mechanism	Brake holding mechanism	Brake holding mechanism	Brake holding mechanism
DIMENSIONS / CAPACITIES	Cage	Profiled cage, ROPS approved	Profiled cage, ROPS approved	Profiled cage, ROPS approved	Profiled cage, ROPS approved	Profiled cage, ROPS approved
	Estimated Dry Weight*	1,456 lb (660 kg)	1,516 lb (687.8 kg)	1,479 lb (671 kg)	1,572 lb (713 kg)	1,594 lb (723 kg)
	L x W x H	121 x 62 x 76 in. (307.1 x 157.5 x 193 cm)	125.7 x 62 x 78 in. (319.4 x 157.5 x 198.1 cm)	121 x 62 x 76 in. (307.1 x 157.5 x 193 cm)	125.7 x 64 x 80 in. (319.4 x 162.5 x 203.2cm)	125.7 x 64 x 80 in. (319.4 x 162.5 x 203.2cm)
	Wheelbase	83 in. (211.5 cm)	83 in. (211.5 cm)	83 in. (211.5 cm)	83 in. (211.5 cm)	83 in. (211.5 cm)
	Ground Clearance	11 in. (28 cm)	11 in. (28 cm)	11 in. (28 cm)	13 in. (33 cm)	13 in. (33 cm)
	Cargo Box Dimensions	38 x 54.5 x 12 in. (96.5 x 138.4 x 30.5 cm)	38 x 54.5 x 12 in. (96.5 x 138.4 x 30.5 cm)	38 x 54.5 x 12 in. (96.5 x 138.4 x 30.5 cm)	38 x 54.5 x 12 in. (96.5 x 138.4 x 30.5 cm)	38 x 54.5 x 12 in. (96.5 x 138.4 x 30.5 cm)
	Cargo Box Capacity	1,000 lb (454 kg)	1,000 lb (454 kg)	1,000 lb (454 kg)	1,000 lb (454 kg)	1,000 lb (454 kg)
	Power tilt bed	N/A	N/A	N/A	N/A	N/A
	Tailgate Load Capacity	250 lb (113.4 kg)	250 lb (113.4 kg)	250 lb (113.4 kg)	250 lb (113.4 kg)	250 lb (113.4 kg)
	Storage Capacity	Total: 3.1 gal (11.7 L)	Total: 6.5 gal (24.5 L)	Total: 3.1 gal (11.7 L)	Total: 6.5 gal (24.5 L)	Total: 6.5 gal (24.5 L)
	Towing Capacity	2,500 lb (1,134 kg)	2,500 lb (1,134 kg)	2,500 lb (1,134 kg)	2,500 lb (1,134 kg)	2,500 lb (1,134 kg)
	Payload Capacity	1,500 lb (680 kg)	1,500 lb (680 kg)	1,500 lb (680 kg)	1,500 lb (680 kg)	1,500 lb (680 kg)
Fuel Capacity	10.6 gal (40 L)	10.6 gal (40 L)	10.6 gal (40 L)	10.6 gal (40 L)	10.6 gal (40 L)	
Person Capacity	3	3	3	3	3	
FEATURES	Gauge	7.6 in. wide digital display with keypad	7.6 in. wide digital display with keypad	7.6 in. wide digital display with keypad	7.6 in. wide digital display with keypad	7.6 in. wide digital display with keypad
	Battery	12-V (18 amp/h)	12-V (30 amp/h)	12-V (18 amp/h)	12-V (30 amp/h)	12-V (30 amp/h)
	Magneto	650-W	650-W	650-W	650-W	650-W
	Instrumentation	DC outlet (10-A)	DC outlet (10-A)	DC outlet (10-A)	DC outlet (10-A)	DC outlet (10-A)
	Lighting	Front lighting output 140-W LED tail lights	Front lighting output 140-W LED tail lights	Front lighting output 140-W LED tail lights	Front lighting output 140-W LED tail lights	Front lighting output 140-W LED tail lights
	Winch	N/A	4,500 lb (2,041 kg) winch with roller fairlead	N/A	4,500 lb (2,041 kg) winch with roller fairlead	4,500 lb (2,041 kg) winch with roller fairlead
	Seat	60/40 VERSA-PRO bench seat with passenger seats flipping up, Underside hooks, adjustable driver seat	60/40 VERSA-PRO bench seat with passenger seats flipping up, underside hooks, reinforced seat skin, adjustable driver seat	60/40 VERSA-PRO bench seat with passenger seats flipping up, Underside hooks, adjustable driver seat	60/40 VERSA-PRO bench seat with passenger seats flipping up, underside hooks, reinforced seat skin, adjustable driver seat	60/40 VERSA-PRO bench seat with passenger seats flipping up, underside hooks, reinforced seat skin, adjustable driver seat
	Steering Wheel	Adjustable tilt steering	Adjustable tilt steering	Adjustable tilt steering	Adjustable tilt steering	Adjustable tilt steering
	Protection	Integrated front steel bumper HMWPE central skid plate	Integrated front steel bumper HMWPE full skid plate	Integrated front steel bumper HMWPE central skid plate	Integrated front steel bumper HMWPE full skid plate Front fender extension	Integrated front steel bumper HMWPE full skid plate Front fender extension
	Hitch Type	2 in. hitch receiver with rear hitch, tow ball and trailer connexion	2 in. hitch receiver with rear hitch, tow ball and trailer connexion	2 in. hitch receiver with rear hitch, tow ball and trailer connexion	2 in. hitch receiver with rear hitch, tow ball and trailer connexion	2 in. hitch receiver with rear hitch, tow ball and trailer connexion


TRAXTER

TRAXTER MAX XU HD10 T ABS

 Dusty Navy



TRAXTER PRO XU HD10 T ABS

 Compass Green



	TRAXTER MAX XU HD10 T ABS	TRAXTER PRO XU HD10 T ABS	
ENGINES	Type	82 hp / 69 lb-ft, Rotax® 976 cc, V-twin, liquid cooled, catalytic converter	82 hp / 69 lb-ft, Rotax® 976 cc, V-twin, liquid cooled, catalytic converter
	Fuel Delivery System	Intelligent Throttle Control (ITC™) with Electronic Fuel Injection (EFI)	Intelligent Throttle Control (ITC™) with Electronic Fuel Injection (EFI)
	Transmission	PRO-TORQ CVT with Quick Response System (QRS), high airflow ventilation and Electronic Drive Belt Protection Extra-L / H / N / R / P	PRO-TORQ CVT with Quick Response System (QRS), high airflow ventilation and Electronic Drive Belt Protection Extra-L / H / N / R / P
	Drive Train	Selectable Turf Mode / 2WD / 4WD with open front differential with ABS system	Selectable Turf Mode / 2WD / 4WD with open front differential with ABS system
	Driving Assistance	Electronic Hill Descent Control ECO™ / ECO™ Off / Work modes Speed Limiter	Electronic Hill Descent Control ECO™ / ECO™ Off / Work modes Speed Limiter
	Power Steering	Dynamic Power Steering (DPS™)	Dynamic Power Steering (DPS™)
SUSPENSIONS	Front Suspension	Arched double A-arm / 11 in. (27.9 cm) suspension travel	Arched double A-arm / 11 in. (27.9 cm) suspension travel
	Front Shocks	Twin tube gas charged shocks	Twin tube gas charged shocks
	Rear Suspension	Arched TTA with external sway bar / 11 in. (27.9 cm) suspension travel	Arched TTA with external sway bar / 11 in. (27.9 cm) suspension travel
	Rear Shocks	Twin tube gas charged shocks	Twin tube gas charged shocks
TIRES / WHEELS	Front / Rear Tires	Maxxis Coronado 2.0† 27 x 9/11 x 14 in.	Maxxis Coronado 2.0† 27 x 9/11 x 14 in.
	Wheels	14 in. cast-aluminum	14 in. cast-aluminum
BRAKES	Front	Dual 220 mm disc brakes with hydraulic twin-piston calipers	Dual 220 mm disc brakes with hydraulic twin-piston calipers
	Rear	Dual 220 mm disc brakes with hydraulic twin-piston calipers	Dual 220 mm disc brakes with hydraulic twin-piston calipers
	Others	Brake holding mechanism	Brake holding mechanism
DIMENSIONS / CAPACITIES	Cage	Profiled cage. ROPS approved	Profiled cage. ROPS approved
	Estimated Dry Weight*	1,862 lb (845 kg)	1,964 lb (891 kg)
	L x W x H	153.4 x 64 x 77.5 in. (389.6 x 162.5 x 196.9 cm)	154.1 x 64 x 78 in. (391.5 x 162.5 x 198.1 cm)
	Wheelbase	115.5 in. (294 cm)	115.5 in. (294 cm)
	Ground Clearance	12.5 in. (31.8 cm)	12.5 in. (32 cm)
	Cargo Box Dimensions	38 x 54.5 x 12 in. (96.5 x 138.4 x 30.5 cm)	72 x 54.5 x 10 in. (180.3 x 138.4 x 25.4 cm)
	Cargo Box Capacity	1,000 lb (454 kg)	1,200 lb (544 kg)
	Power tilt bed	N/A	N/A
	Tailgate Load Capacity	250 lb (113.4 kg)	250 lb (113.4 kg)
	Storage Capacity	Total: 11.1 gal (42.1 L)	Total: 94 gal (356 L)
	Towing Capacity	2,500 lb (1,134 kg)	2,500 lb (1,134 kg)
	Payload Capacity	1,750 lb (793.8 kg)	1,700 lb (771 kg)
Fuel Capacity	10.6 gal (40 L)	10.6 gal (40 L)	
Person Capacity	6	3	
FEATURES	Gauge	7.6 in. wide digital display with keypad	7.6 in. wide digital display with keypad
	Battery	12-V (30 amp/h)	12-V (30 amp/h)
	Magneto	650-W	650-W
	Instrumentation	DC outlet (10-A)	DC outlet (10-A)
	Lighting	Front lighting output 140-W LED tail lights	Front lighting output 140-W LED tail lights
	Winch	4,500 lb (2,041 kg) winch with roller fairlead	4,500 lb (2,041 kg) winch with roller fairlead
	Seat	60/40 VERSA-PRO bench seat with passenger seats flipping up, underside hooks, reinforced seat skin adjustable driver seat	60/40 VERSA-PRO bench seat with passenger seats flipping up, underside hooks, reinforced seat skin adjustable driver seat
	Steering Wheel	Adjustable tilt steering	Adjustable tilt steering
	Protection	Integrated front steel bumper HMWPE full skid plate Front fender extension	Integrated front steel bumper HMWPE full skid plate Front fender extension
	Hitch Type	2 in. hitch receiver with rear hitch, tow ball and trailer connexion	2 in. hitch receiver with rear hitch, tow ball and trailer connexion

TRAXTER



TRAXTER DPS HD9

■ Compass Green



TRAXTER XT HD10

■ Stealth Black



TRAXTER X MR HD10

■ Hyper Silver & Legion Red

	Type	65 hp / 59 lb-ft, Rotax® 976 cc, V-twin, liquid cooled	82 hp / 69 lb-ft, Rotax® 976 cc, V-twin, liquid cooled	82 hp / 69 lb-ft, Rotax® 976 cc, V-twin, liquid cooled with strategically positioned engine air intake
ENGINES	Fuel Delivery System	Intelligent Throttle Control (ITC™) with Electronic Fuel Injection (EFI)	Intelligent Throttle Control (ITC™) with Electronic Fuel Injection (EFI)	Intelligent Throttle Control (ITC™) with Electronic Fuel Injection (EFI)
	Transmission	PRO-TORQ CVT with Quick Response System (QRS), high airflow ventilation and Electronic Drive Belt Protection Extra-L / H / N / R / P	PRO-TORQ CVT with Quick Response System (QRS), high airflow ventilation and Electronic Drive Belt Protection Extra-L / H / N / R / P	PRO-TORQ CVT with Quick Response System (QRS), Electronic Drive Belt Protection, lower gearing ratio and high airflow ventilation with strategically positioned CVT air intake and exhaust Extra-L / H / N / R / P
	Drive Train	Selectable Turf Mode / 2WD / 4WD with Visco-Lok† auto-locking front differential	Selectable Turf Mode / 2WD / 4WD with Visco-Lok† auto-locking front differential	Selectable Turf Mode / 2WD / 4WD TRAIL / 4WD MUD with exclusive Smart-Lok*
	Driving Assistance	CVT Engine Braking ECO™ / ECO™ Off / Work modes Speed Limiter	CVT Engine Braking ECO™ / ECO™ Off / Work modes Speed Limiter	CVT Engine Braking ECO™ / ECO™ Off / Work modes Speed Limiter
	Power Steering	Dynamic Power Steering (DPS™)	Dynamic Power Steering (DPS™)	Dynamic Power Steering (DPS™)
	SUSPENSIONS	Front Suspension	Double A-arm / 10 in. (25.4 cm) suspension travel	Arched double A-arm / 11 in. (27.9 cm) suspension travel
Front Shocks		Twin tube gas charged shocks	Twin tube gas charged shocks	Twin tube gas charged shocks
Rear Suspension		TTA with external sway bar / 10 in. (25.4 cm) suspension travel	Arched TTA with external sway bar / 11 in. (27.9 cm) suspension travel	Arched TTA with external sway bar / 12 in. (30.5cm) suspension travel
Rear Shocks		Twin tube gas charged shocks	Twin tube gas charged shocks	Twin tube gas charged shocks
TIRES / WHEELS	Front / Rear Tires	XPS Trail Force 2 7 x 9/11 x 14 in.	XPS Trail King 27 x 9/11 x 14 in.	XPS Swamp Force 30 x 9/11 x 14 in.
	Wheels	14 in. cast-aluminum	14 in. cast-aluminum	14 in. (35.6 cm) cast-aluminum
BRAKES	Front	Dual 220 mm disc brakes with hydraulic twin-piston calipers	Dual 220 mm disc brakes with hydraulic twin-piston calipers	Dual 220 mm disc brakes with hydraulic twin-piston calipers
	Rear	Dual 220 mm disc brakes with hydraulic single-piston calipers	Dual 220 mm disc brakes with hydraulic single-piston calipers	Dual 220 mm disc brakes with hydraulic single-piston calipers
	Others	N/A	Brake holding mechanism	Brake holding mechanism
DIMENSIONS / CAPACITIES	Cage	Profiled cage. ROPS approved	Profiled cage. ROPS approved	Profiled cage. ROPS approved
	Estimated Dry Weight*	1,541 lb (699 kg)	1,623 lb (736 kg)	1,746 lb (792 kg)
	L x W x H	121 x 62 x 76 in. (307.1 x 157.5 x 193 cm)	125.7 x 64 x 80 in. (319.4 x 162.5 x 203.2cm)	129.4 x 64 x 82 in. (328.6 x 162.6 x 208.3 cm)
	Wheelbase	83 in. (211.5 cm)	83 in. (211.5 cm)	83 in. (211.5 cm)
	Ground Clearance	11 in. (28 cm)	13 in. (33 cm)	15 in. (38.1 cm)
	Cargo Box Dimensions	38 x 54.5 x 12 in. (96.5 x 138.4 x 30.5 cm)	38 x 54.5 x 12 in. (96.5 x 138.4 x 30.5 cm)	38 x 54.5 x 12 in. (96.5 x 138.4 x 30.5 cm)
	Cargo Box Capacity	1,000 lb (454 kg)	1,000 lb (454 kg)	1,000 lb (454 kg)
	Power tilt bed	N/A	N/A	N/A
	Tailgate Load Capacity	250 lb (113.4 kg)	250 lb (113.4 kg)	250 lb (113.4 kg)
	Storage Capacity	Total: 10.4 gal (39.5 L)	Total: 16.2 gal (61.3 L)	Total: 16.2 gal (61.3 L)
	Towing Capacity	2,500 lb (1134 kg)	2,500 lb (1134 kg)	2,500 lb (1134 kg)
	Payload Capacity	1,500 lb (680 kg)	1,500 lb (680 kg)	1,500 lb (680 kg)
	Fuel Capacity	10.6 gal (40 L)	10.6 gal (40 L)	10.6 gal (40 L)
Person Capacity	3	3	3	
FEATURES	Gauge	4.5 in. wide digital display	4.5 in. wide digital display	7.6 in. wide digital display with keypad
	Battery	12-V (18 amp/h)	12-V (30 amp/h)	12-V (30 amp/h)
	Magneto	650-W	650-W	650-W
	Instrumentation	DC outlet (10-A)	DC outlet (10-A) USB Port (10-A) x 2	DC outlet (10-A) USB Port (10-A) x 2
	Lighting	Front lighting output 140-W LED tail lights	Front lighting output 140-W LED tail lights	Front lighting output 140-W LED Signature LED tail lights
	Winch	N/A	4,500 lb (2,041 kg) winch with roller fairlead	Relocated 4,500 lb (2,041 kg) winch with synthetic rope and roller fairlead
	Seat	VERSA-PRO bench seat with passenger seats flipping up Underside hooks	VERSA-PRO bolster bench seats with passenger seats flipping up Adjustable driver seat, underside hooks, reinforced XT seat skin	VERSA-PRO bolster bench seats with passenger seats flipping up Adjustable driver seat, underside hooks, reinforced seat skin featuring X package trims
	Steering Wheel	Adjustable tilt steering	Adjustable tilt steering	Adjustable tilt steering
	Protection	Integrated front steel bumper HMWPE central skid plate	XT Front bumper HMWPE full skid plate Full hard roof	Heavy-duty front steel bumper HMWPE full skid plate Aluminum rock sliders Mudguards
	Hitch Type	2 in hitch receiver	2 in hitch receiver	2 in hitch receiver

TRAXTER



TRAXTER DPS HD9

■ Compass Green



TRAXTER XT HD10

■ Stealth Black



TRAXTER 6X6 DPS HD10

■ Compass Green

	TRAXTER DPS HD9	TRAXTER XT HD10	TRAXTER 6X6 DPS HD10	
ENGINES	Type	65 hp / 59 lb-ft, Rotax® 976 cc, V-twin, liquid cooled	82 hp / 69 lb-ft, Rotax® 976 cc, V-twin, liquid cooled	82 hp / 69 lb-ft, Rotax® 976 cc, V-twin, liquid cooled
	Fuel Delivery System	Intelligent Throttle Control (ITC™) with Electronic Fuel Injection (EFI)	Intelligent Throttle Control (ITC™) with Electronic Fuel Injection (EFI)	Intelligent Throttle Control (ITC™) with Electronic Fuel Injection (EFI)
	Transmission	PRO-TORQ CVT with Quick Response System (QRS), high airflow ventilation and Electronic Drive Belt Protection Extra-L / H / N / R / P	PRO-TORQ CVT with Quick Response System (QRS), high airflow ventilation and Electronic Drive Belt Protection Extra-L / H / N / R / P	PRO-TORQ CVT with Quick Response System (QRS), high airflow ventilation and Electronic Drive Belt Protection Extra-L / H / N / R / P
	Drive Train	Selectable Turf Mode / 2WD / 4WD with Visco-Lok† auto-locking front differential	Selectable Turf Mode / 2WD / 4WD with Visco-Lok† auto-locking front differential	Selectable 4WD / 6WD auto-Locking front differential
	Driving Assistance	CVT Engine Braking ECO™ / ECO™ Off / Work modes Speed Limiter	CVT Engine Braking ECO™ / ECO™ Off / Work modes Speed Limiter	CVT Engine Braking ECO™ / ECO™ Off / Work modes Speed Limiter
	Power Steering	Dynamic Power Steering (DPS™)	Dynamic Power Steering (DPS™)	Dynamic Power Steering (DPS™)
SUSPENSIONS	Front Suspension	Double A-arm / 10 in. (25.4 cm) suspension travel	Arched double A-arm / 11 in. (27.9 cm) suspension travel	Arched double A-arm / 11 in. (27.9 cm) suspension travel
	Front Shocks	Twin tube gas charged shocks	Twin tube gas charged shocks	Twin tube gas charged shocks
	Rear Suspension	TTA with external sway bar / 10 in. (25.4 cm) suspension travel	Arched TTA with external sway bar / 11 in. (27.9 cm) suspension travel	Arched TTA with external sway bar / 11 in. (27.9 cm) suspension travel
	Rear Shocks	Twin tube gas charged shocks	Twin tube gas charged shocks	Twin tube gas charged shocks
TIRES / WHEELS	Front / Rear Tires	XPS Trail Force 2 7 x 9/11 x 14 in.	XPS Trail King 27 x 9/11 x 14 in.	XPS Trail King 27 x 9/11 x 14 in.
	Wheels	14 in. cast-aluminum	14 in. cast-aluminum	14 in. cast-aluminum
BRAKES	Front	Dual 220 mm disc brakes with hydraulic twin-piston calipers	Dual 220 mm disc brakes with hydraulic twin-piston calipers	Dual 220 mm disc brakes with hydraulic twin-piston calipers
	Rear	Dual 220 mm disc brakes with hydraulic single-piston calipers	Dual 220 mm disc brakes with hydraulic single-piston calipers	Dual 220 mm disc brakes with hydraulic twin-piston calipers
	Others	N/A	Brake holding mechanism	N/A
DIMENSIONS / CAPACITIES	Cage	Profiled cage. ROPS approved	Profiled cage. ROPS approved	Profiled cage. ROPS approved
	Estimated Dry Weight*	1,541 lb (699 kg)	1,623 lb (736 kg)	1,953 lb (886 kg)
	L x W x H	121 x 62 x 76 in. (307.1 x 157.5 x 193 cm)	125.7 x 64 x 80 in. (319.4 x 162.5 x 203.2cm)	154.1 x 64 x 78 in. (391.5 x 162.5 x 198.1 cm)
	Wheelbase	83 in. (211.5 cm)	83 in. (211.5 cm)	115.5 in. (294 cm)
	Ground Clearance	11 in. (28 cm)	13 in. (33 cm)	13 in. (33 cm)
	Cargo Box Dimensions	38 x 54.5 x 12 in. (96.5 x 138.4 x 30.5 cm)	38 x 54.5 x 12 in. (96.5 x 138.4 x 30.5 cm)	72 x 54.5 x 10 in. (180.3 x 138.4 x 25.4 cm)
	Cargo Box Capacity	1,000 lb (454 kg)	1,000 lb (454 kg)	1,000 lb (454 kg)
	Power tilt bed	N/A	N/A	N/A
	Tailgate Load Capacity	250 lb (113.4 kg)	250 lb (113.4 kg)	250 lb (113.4 kg)
	Storage Capacity	Total: 10.4 gal (39.5 L)	Total: 16.2 gal (61.3 L)	Total: 10.4 gal (39.5 L)
	Towing Capacity	2,500 lb (1134 kg)	2,500 lb (1134 kg)	3,000 lb (1360.8 kg)
	Payload Capacity	1,500 lb (680 kg)	1,500 lb (680 kg)	1,700 lb (771 kg)
	Fuel Capacity	10.6 gal (40 L)	10.6 gal (40 L)	10.6 gal (40 L)
Person Capacity	3	3	3	
FEATURES	Gauge	4.5 in. wide digital display	4.5 in. wide digital display	4.5 in. wide digital display
	Battery	12-V (18 amp/h)	12-V (30 amp/h)	12-V (30 amp/h)
	Magneto	650-W	650-W	650-W
	Instrumentation	DC outlet (10-A)	DC outlet (10-A) USB Port (10-A) x 2	DC outlet (10-A)
	Lighting	Front lighting output 140-W LED tail lights	Front lighting output 140-W LED tail lights	Front lighting output 140-W LED tail lights
	Winch	N/A	4,500 lb (2,041 kg) winch with roller fairlead	N/A
	Seat	VERSA-PRO bench seat with passenger seats flipping up Underside hooks	VERSA-PRO bolster bench seats with passenger seats flipping up Adjustable driver seat, underside hooks, reinforced XT seat skin	VERSA-PRO bench seat with passenger seats flipping up Underside hooks
	Steering Wheel	Adjustable tilt steering	Adjustable tilt steering	Adjustable tilt steering
	Protection	Integrated front steel bumper HMWPE central skid plate	XT Front bumper HMWPE full skid plate Full hard roof	Integrated front steel bumper HMWPE central skid plate
	Hitch Type	2 in hitch receiver	2 in hitch receiver	2 in hitch receiver

TRAXTER ACCESSORIES

Roofs	10
Cabs	11
Windshields & Mirrors	12
Rear Wind Protection	14
Doors	15
Seat Accessories	17
Aluminum Skid Plates	18
Bumpers & Guards	19
LinQ: Easy On, Easy Off Cargo	22
Cargo & Storage	27
Racks & Holders	30
Lights	33
Audio & Communication Systems	36
Electronic Accessories	37
Winches & Hitches	40
Performance	43
Apache Track Systems	45
ProMount Plows	48
Covers & Add-Ons	52



BUNDLE UP TO GET IT ALL DONE. YOUR TRAXTER BUNDLES.





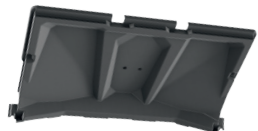
STEP 1: CHOOSE YOUR ESSENTIAL BUNDLE

		Traxter	Traxter MAX	Traxter PRO and 6x6
STARTER	Sport Roof	715002430	715003038	715002430
	Flip Windshield – Hardcoated	715002442	715002442	715002442
	Rear Polycarbonate Window	715007081	715007081	715007081
	Side Mirror	715008101	715008101	715008100
	Dash Storage Compartment Nets	715003129	715003129	715003129
ADVANCED	LinQ Tailgate Extension/Divider	715002464	715002464	715005412
	LinQ Cargo Rack for Long Box	715006140	715006140	715006140
	Cargo Bed Protectors & Tie Rails	N/A	N/A	715005415
	LinQ 12 Gal (45 L) Cargo Box	715003879	715003879	715003879
	Rear Accessory Bar	715005450	715005450	715005450
	LinQ Adapter	715003058	715003058	715003058
PEAK	Rear View Mirror and Camera Monitor	715009410	715009410	715009410
	LinQ Tool Holder	715007358	715007358	715007358
	Fender Flares	715006821	715006821	715005409 6x6 715006001 Pro
	Center Underseat Storage Bin	715003446	715003446	715003446

STEP 2: PICK YOUR ADD-ON BUNDLE

		Traxter	Traxter MAX	Traxter PRO and 6x6
AUDIO	Can-Am Audio Roof	715005206	N/A	715005206
	Can-Am Audio Roof MAX	N/A	715006879	N/A
	USB Power Outlet Kit	219400510	219400510	219400510
	Auxiliary Battery Installation Kit	715006035	715006035	715006035
HUNT	Dual Gun Holder	715005265	715005265	715005265
	Rock Sliders	715006671	715006721	715006721
	LinQ 8 Gal (30 L) Cooler Box	715004778	715004778	715004778
WORK	Deluxe Headache Rack	715002423	715002423	715002423
	LinQ Front Rack	715006064	715006064	715006064
	Front Bumper	715005754	715005754	715005754
	LinQ Tool & Gun Holder	715005466	715005466	715005466
WINTER	Front Soft Doors	715008059	715008059	715008059
	Rear Soft Doors	N/A	715006318	N/A
	Defrost, Heat & Ventilation System	715008093 715008095	715008093 715008095	715008093 715008095
	Tonneau Cover	715008306	715008306	N/A

ROOFS

Sport Roof	Traxter Traxter MAX	715002430 715003038
	<ul style="list-style-type: none"> • Robust injection-molded polypropylene construction. • Provides added protection for rider and passenger from the elements. 	
Deluxe Sport Roof	Traxter Traxter MAX	715002511 715003039
	<ul style="list-style-type: none"> • Complete roof kit provides extra driver and passenger protection and also diminishes noise within the cab. • Perfect fit and finish thanks to the seal kit and the liners included. • Rear Roof Liner is not compatible with Soft Rear Panel. Includes <ul style="list-style-type: none"> - Sport Roof - Sport Roof Seal Kit - Front Roof Liner - Rear Roof Liner 	
Sport Roof Seal Kit <i>(Not illustrated)</i>	Traxter Traxter MAX	715003126 715003583
<ul style="list-style-type: none"> • Necessary when installing individual cab components with Sport Roof or when installing the Front and Rear Roof Liners. 		
Bimini Roof with Sun Visor	Traxter MAX	■ 715003030 · Black
	<ul style="list-style-type: none"> • Heavy-duty canvas made of UV-resistant polyester. • Soft top comes with a hard visor that allows for storage of rolled-up soft top and mounting of Light Rack. • Quick and easy installation. 	
Front Roof Liner	Traxter, Traxter MAX	715008226
	<ul style="list-style-type: none"> • Vehicle enhancement. • Integrates seamlessly with roof-mounted light switch. • Required for installation of roof-mounted lights and audio systems. • Allows a better integration of Windshield Wiper and Washer Kit. • Seal Kit necessary when installing with Sport Roof. 	
Rear Roof Liner	Traxter† Traxter MAX‡ (Not illustrated)	715006334 715006391
	<ul style="list-style-type: none"> • Quick and easy vehicle enhancement. • Allows better integration of other accessories installed on the roof. • Seal Kit necessary when installing with Sport Roof. • Not compatible with: 715002920, 715006680, 715003249, 715002852. †Needs to be installed with Sport Roof (715002430). ‡Needs to be installed with Sport Roof (715003038).	

CABS

Hard Cabs

Clear Rigid Cab

Traxter (all model years) (except X mr models)

715007269

Traxter MAX 2022 & up (except X mr models)

715007270



- Includes:
 - Front Clear Rigid Doors
 - Sport Roof
 - Flip Glass Windshield
 - Rear Polycarbonate Window
 - Sport Roof Seal Kit

Installation of some accessories shown may impact vehicle compliance with some regulations. Consult your local dealer for information.

NEW Deluxe Cab Enclosure

Traxter (all model years) (except X mr models)

715009904

Traxter MAX 2022 & up (models produced after January 18, 2021) (except X mr models)

715009905



- Provides driver and passenger with the best protection from the elements and the cold, and features the most complete top-of-the-line accessories our product lineup has to offer.
- Includes:
 - Deluxe Sport Roof Kit
 - Flip Glass Windshield with Wiper and Washer Kit
 - Front Deluxe Full Doors with key locking door latches
 - Rear Glass Window with Sliding Panel
 - Wiper and Powered Windows Cable
 - Roof Power Cable
 - Color Panels required (sold separately)

Installation of some accessories shown may impact vehicle compliance with some regulations. Consult your local dealer for information.

Soft Cabs

Soft Cab Enclosure

(Not illustrated)

Traxter (all model years)

715008063

Traxter MAX 2018 & prior, Traxter MAX 2022 & up (models produced after January 18, 2021)

715008064

- Included:
- Sport Roof
 - Full Hardcoated Windshield
 - Soft Doors
 - Rear Polycarbonate Window

Installation of some accessories shown may impact vehicle compliance with some regulations. Consult your local dealer for information.

Cab Kits – Reference Chart

	Deluxe Cab Enclosure	Deluxe Cab Enclosure MAX	Clear Rigid Cab	Clear Rigid Cab MAX	Soft Cab Enclosure	Soft Cab Enclosure MAX
Kit	715009904	715009905	715007269	715007270	715008063	715008064
Windshield	715002441	715002441	715002942	715002942	715002432	715002432
Rear Window	715007080	715007080	715007081	715007081	715007081	715007081
Roof	715002430	715003038	715002430	715003038	715002430	715003038
Front Doors	715009906	715009906	715006261	715006261	715008059	715008059
Rear Doors	-	715009907	-	715006262	-	715006318
Others	715004462 715003094 715003126 715008226 715006334	715004462 715003094 715003583 715008226 715006391	715003126	715003583	-	-

WINDSHIELDS & MIRRORS

Windshields

Powerflip Windshield

Traxter, Traxter MAX

715003885



- The PowerFlip Windshield is equipped with electric cylinders that allow the rider to adjust the windshield opening at the touch of a button.
- Windshield is made of hardcoated polycarbonate with a rubber seal contour and a tinted top section.
- Allows you to quickly adapt to changing conditions by adjusting the windshield as you go.

- Can be fully opened for optimal visibility and ventilation, fully closed for maximum protection from the elements, and in between, you have an infinite number of opening possibilities depending on protection, visibility and air flow preferences.
- Compatible with Can-Am roofs and windshield wiper and washer kit.

Installation of some accessories shown may impact vehicle compliance with some regulations. Consult your local dealer for information.

Flip Glass Windshield

Traxter, Traxter MAX

715002942



- Curved and laminated glass full windshield in metal frame.
- Provides excellent optical clarity.
- Seals firmly against the cage and protects rider and passenger from the elements while allowing for controlled air flow.
- 3-position flip can be set at fully closed, ¼ open, or fully open.

- Gas-shock-assisted operation and pivots on 2 hinges located at the top of the windshield.
- Ideal for muddy conditions.
- Can be used with Windshield Wiper & Washer Kit (715001638).

Installation of some accessories shown may impact vehicle compliance with some regulations. Consult your local dealer for information.

Flip Glass Windshield With Wiper & Washer Kit

Traxter, Traxter MAX

715002441



- Curved and laminated glass full windshield in metal frame.
- Provides excellent optical clarity.
- Seals firmly against the cage and protects rider and passenger from the elements while allowing for controlled airflow.
- Flip windshield can be set fully closed or fully open according to your preference.

- Ideal for muddy conditions.
- Gas-shock-assisted operation and pivots on 2 hinges located at the top of the windshield.
- Single-speed wiper with washer fluid dispenser.
- Requires Wiper and Power Cables: If equipped with the Sport Roof, Power Cables 710004462 & 715003094 are required. If equipped with the Audio Roof, Power Cables 715008781 & 715003094 are required.

Installation of some accessories shown may impact vehicle compliance with some regulations. Consult your local dealer for information.

Flip Windshield – Hardcoated

Traxter, Traxter MAX

715002442



- High-impact-resistant Makrolon¹ hardcoated polycarbonate full windshield in metal frame.
- Provides excellent optical clarity and better abrasion resistance.
- Seals firmly against the cage and protects rider and passenger from the elements while allowing for controlled air flow.

- 3-position flip can be set at fully closed, ¼ open, or fully open.
- Gas-shock-assisted operation.
- Ideal for muddy conditions.

Installation of some accessories shown may impact vehicle compliance with some regulations. Consult your local dealer for information.

Glass Windshield

Traxter, Traxter MAX

715001303



- Curved and laminated glass full windshield in metal frame.
- Seals firmly against the cage and protects rider and passenger from the elements while providing excellent optical clarity.

- Must be used with Windshield Wiper & Washer Kit (715001638) to maintain clear visibility during severe riding conditions.

Installation of some accessories shown may impact vehicle compliance with some regulations. Consult your local dealer for information.

Full Windshield – Hardcoated

Traxter, Traxter MAX

715002432



- High-impact-resistant Makrolon¹ hardcoated polycarbonate full windshield.
- Provides excellent optical clarity and better abrasion resistance.
- Protects driver and passenger from the elements.
- Quick and easy tool-less installation or removal.

Installation of some accessories shown may impact vehicle compliance with some regulations. Consult your local dealer for information.

Full Windshield

Traxter, Traxter MAX

715002431



- High-impact-resistant durable polycarbonate full windshield.
- Formulated to be non-yellowing, non-crazing, non-cracking with excellent UV resistance and optical clarity.

- Protects driver and passenger fro

Installation of some accessories shown may impact vehicle compliance with some regulations. Consult your local dealer for information.

Half Windshield

Traxter, Traxter MAX

715002433



- High-impact-resistant durable polycarbonate half windshield.
- Formulated to be non-yellowing, non-crazing, non-cracking with excellent UV resistance and optical clarity.

- Protects driver and passenger from the elements.
- Features reverse angle lip to deflect air flow.
- Quick and easy tool-less installation or removal.
- Not compatible with Soft Doors.

Installation of some accessories shown may impact vehicle compliance with some regulations. Consult your local dealer for information.

ProVent Windshield

Traxter, Traxter MAX

715005276



- High-impact-resistant Quantum hardcoated polycarbonate full windshield.
- Optimal performance with Full Cab Enclosure.
- Controllable vents to manage air flow.
- Channels air into the cabin, defogs windshield, fully closes to eliminate air flow.

- 2 lower vents and one upper vent (pre-filter installed).
- Provides excellent optical clarity and better abrasion resistance.
- Protects driver and passenger from the elements.
- Quick and easy tool-less installation or removal.
- Not compatible with wiper kits.

Installation of some accessories shown may impact vehicle compliance with some regulations. Consult your local dealer for information.

Windshield Wiper & Washer Kit

Traxter, Traxter MAX

715001638



- An ideal way to keep your windshield clear in rain, or while riding through mud and water.
- Includes single-speed wiper, washer fluid dispenser and windshields frame mount.
- Must be used with the Glass Windshield (715001303) or Flip Glass Windshield (715002942) or Powerflip Windshield (715003885).

- Requires Wiper and Power Cables: If equipped with the Sport Roof, Power Cables 710004462 & 715003094 are required. If equipped with the Audio Roof, Power Cables 715008781 & 715003094 are required.

Installation of some accessories shown may impact vehicle compliance with some regulations. Consult your local dealer for information.

Wiper & Power Window Cable

(Not illustrated)

Traxter, Traxter MAX

715008781

- Required to install the Audio Roof (715005206 or 715006879) with the following accessories: Flip Glass Windshield with Wiper & Washer Kit (715002441), Windshield Wiper & Washer Kit (715001638) and Front Deluxe Full doors (715009906 or 715009913).

Wiper & Power Windows Cable

(Not illustrated)

Traxter, Traxter MAX

710004462

- Required to install Front Deluxe Full Doors (715009906 or 715009913) and/or windshield wiper & washer kit (715001638).
- Necessary if you want to build your own cab enclosure from modular components.

Manual Wiper Kit

Traxter, Traxter MAX

715008755



- Single manual wiper that can be used to clear windshield of debris.
- Easy to install system that requires no electrical hookup.
- Large ergonomic handle provides a good grip over the entire sweeping surface.
- Compatible with glass and hardcoated windshields that use top mounted wipers.

Installation of some accessories shown may impact vehicle compliance with some regulations. Consult your local dealer for information.

Side Wind Deflectors

Traxter, Traxter MAX

715005081



- Clear polycarbonate air deflectors mount on each side of the cage.
- Not compatible with Full Doors.
- Sold in pairs.
- Compatible with all windshields.

- Can be adjusted at three different positions for cabin air flow control when a full windshield is installed:
 1. Outside deflection to reduce cabin air flow and turbulence.
 2. Inside deflection to increase air flow in the cabin.
 3. Windshield ventilation to reduce fog.

Mirrors

Side Mirrors

Traxter, Traxter MAX

■ **715008100** · Black



- Rugged black nylon 6/6 construction with coated cast-aluminum mount.
- Dual adjustment (horizontal and vertical) will suit any rider.
- Convex optics deliver optimal field of view (FOV).
- Spring-loaded pivots let mirrors fold back completely.

- Fit with and without doors and half doors.
- Sold in pairs.
- Not compatible with Soft Doors and Soft Cab Enclosures.

Side Mirror

Traxter, Traxter MAX (2022 & up)
Traxter, Traxter MAX (2021 & prior)

■ **715008101***
■ **715002459**



- Molded heavy-duty aluminum mirror.
- Stays in place on rough trails.
- Ball-joint design for steady multi-angle adjustment and outstanding vision.
- Use with or without any roof, windshield or doors.

- Not for road use.
- Fits either side.
- Sold individually.

*Not compatible with the Half Doors (715006314 & 715006316).

Installation of some accessories shown may impact vehicle compliance with some regulations. Consult your local dealer for information.

Rear View Mirror & Camera Monitor

Traxter, Traxter MAX

715009410



- Fully waterproof rearview mirror and monitor kit.
- See exactly what you need to see with the multiple camera feeds from the rear view camera.
- This unit replaces the stock rearview mirror (the screen is integrated in the unit's replacement rearview mirror).
- The camera uses infrared light for night vision capabilities.

Panoramic Center Mirror

Traxter, Traxter MAX

715003638



- Wide-angle convex mirror.
- Offers enhanced visibility.
- Can be used with or without roof or windshield and with cab enclosures.

REAR WIND PROTECTION

Rear Glass Window with Sliding Panel

Traxter, Traxter MAX
(except X mr models)

715007080



- Made of high-strength tempered glass.
- Ideal for preventing backdraft of dust or rain in harsh environments.
- Sliding panel for enhanced ventilation.
- Quick and easy installation.

- Sport Roof (715002430 or 715003038) required for installation.
- Not compatible with Snorkel Kit.

Rear Glass Window

Traxter, Traxter MAX
(except X mr models)

■ **715009915** · Tinted **NEW**
□ **715007079** · Clear



- Made of high-strength tempered glass.
- Ideal for preventing backdraft of dust or rain in harsh environments.
- Quick and easy installation.
- Sport Roof (715002430 or 715003038) required for installation.

- Not compatible with Snorkel Kit.
- Tinted glass 14% VLT (visual light transmission).
- Rear Wind Protection Installation Seal Kit (715006705) required for installation on 2020 Traxter models.

Rear Polycarbonate Window

Traxter, Traxter MAX
(except X mr models)

715007081



- High-impact-resistant polycarbonate window.
- Ideal for preventing backdraft of dust or rain in harsh environments.
- Quick and easy installation.

- Sport Roof (715002430 or 715003038) required for installation.
- Not compatible with Snorkel Kit.

Rear Wind Screen

Traxter, Traxter MAX

715002851



- Full rear mesh screen reduces windshield backdraft for added cabin comfort.
- Installs quickly and easily on roll cage.
- White Can-Am logo at top, to help maintain clear view.

Soft Rear Window

Traxter, Traxter MAX

715003249



- Clear, flexible window made of see-through vinyl.
- Resists cold cracking to -4°F (-20°C).
- Blocks windshield backdraft or dust and rain from entering, for added cabin comfort.
- Installs quick and easily on roll cage.
- White Can-Am logo at top, to help maintain clear view.

DOORS

NEW Front Deluxe Full Doors

Traxter (except X mr models),
Traxter MAX (except X mr models)

715009906 · Clear
 715009913 · Tinted



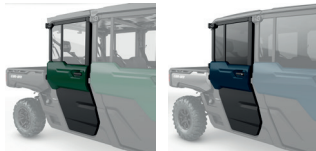
- New key locking door latches.
- Premium doors made from robust polyethylene.
- Offer excellent protection from the elements.
- Tinted glass 55% VLT (visual light transmission).
- Easy to remove on hot and sunny days.
- Convenient integrated storage areas.
- Doors' curved design provides even more room.
- Rear-hinge wide opening for ease of ingress/egress in the cockpit.
- Power window delivers added ventilation.
- Compatible with all BRP windshields.
- Require Wiper & Power Windows Cable (710004462), Roof Power Cable (715003094), Sport Roof Seal Kit (715003126).
- Color Door Trims are required (sold separately).
- Hardware to install the Door Trim is included.

Installation of some accessories shown may impact vehicle compliance with some regulations. Consult your local dealer for information.

NEW Rear Deluxe Full Doors

Traxter MAX 2022 & up (models produced
after January 18, 2021) (except X mr models)

715009907 · Clear
 715009914 · Tinted



- New key locking door latches.
- Premium doors made from robust polyethylene.
- Offer excellent protection from the elements.
- Tinted glass 14% VLT (visual light transmission)
- Easy to remove on hot and sunny days.
- Convenient integrated storage areas.
- Doors' curved design provides even more room.
- Rear-hinge wide opening for ease of ingress/egress in the cockpit.
- Roll-Down Window delivers added ventilation.
- Require Front Deluxe Full Doors (715009906 or 715009913), Wiper & Power Windows Cable (710004462), Roof Power Cable (715003094), Sport Roof Seal Kit (715003583 for MAX vehicle).
- Color Door Trims are required (sold separately).
- Hardware to install the Door Trim is included.

Front Deluxe Half Doors

Traxter and Traxter MAX 2022 & up

715007201



- Premium color matching doors made from robust polyethylene.
- Premium fit and finish.
- Slim with interior pockets.
- Rear hinge wide opening for ease of ingress/egress in the cockpit.
- Interior and exterior handles.
- Color accent panels are required (sold separately).
- Hardware to install the Door Trim is included.

Installation of some accessories shown may impact vehicle compliance with some regulations. Consult your local dealer for information.

Rear Deluxe Half Doors

Traxter MAX 2022 & up

715007202



- Premium color matching doors made from robust polyethylene.
- Premium fit and finish.
- Slim with interior pockets.
- Rear hinge wide opening for ease of ingress/egress in the cockpit.
- Interior and exterior handles.
- Color accent panels are required (sold separately).
- Hardware to install the Door Trim is included.

NEW Front Trims

Front Deluxe Full Doors & Front Deluxe Half Doors



- Customize your Traxter by adding color-matched door panels.
- Front Deluxe Full Doors (715009906), Front Deluxe Full Doors - Tinted Windows (715009913) or Front Deluxe Half Doors (715007201) are required.

Front Left Door Trim

- **705801565** · Dusty Navy **NEW**
- **705801303** · Stealth Black **NEW**
- **705801330** · Compass Green **NEW**
- **705801504** · Timeless Black
- **705801340** · Fiery Red
- **705801344** · WildLand Camo
- **705801408** · Hyper Silver

Front Right Door Trim

- **705801566** · Dusty Navy **NEW**
- **705801305** · Stealth Black **NEW**
- **705801331** · Compass Green **NEW**
- **705801505** · Timeless Black
- **705801341** · Fiery Red
- **705801345** · WildLand Camo
- **705801409** · Hyper Silver

NEW Rear Trims

Rear Deluxe Full Doors & Rear Deluxe Half Doors



- Customize your Traxter by adding color-matched door panels.
- Rear Deluxe Full Doors (715009907), Rear Deluxe Full Doors - Tinted Glass (715009914) or Rear Deluxe Half Doors (715007202) are required.

Rear Left Door Trim

- **705801567** · Dusty Navy **NEW**
- **705801307** · Stealth Black **NEW**
- **705801332** · Compass Green **NEW**
- **705801506** · Timeless Black
- **705801342** · Fiery Red
- **705801346** · WildLand Camo
- **705801410** · Hyper Silver

Rear Right Door Trim

- **705801568** · Dusty Navy **NEW**
- **705801309** · Stealth Black **NEW**
- **705801333** · Compass Green **NEW**
- **705801507** · Timeless Black
- **705801343** · Fiery Red
- **705801347** · WildLand Camo
- **705801411** · Hyper Silver

Front Clear Rigid Doors

Traxter (all model years) (except X mr models),
Traxter MAX 2022 & up (except X mr models)

715006261



- Sturdy and compact steel-frame doors for a robust yet open field of view.
- Lower hardcoated polycarbonate transparent panel maximizes visibility around your unit.
- Upper portion composed of two tempered-glass sliding windows for unmatched air circulation and versatility.
- EC- and ROHVA-compliant for optimal safety, allowing you to remove the stock side protection bar for increased cabin space.
- Sealed contour allows for improved rider comfort in all weather.
- Lockable doors for peace of mind.

Installation of some accessories shown may impact vehicle compliance with some regulations. Consult your local dealer for information.

Rear Clear Rigid Doors

Traxter (all model years) (except X mr models), Traxter MAX 2022 & up (except X mr models)

715006262



- Sturdy and compact steel-frame doors for a robust yet open field of view.
- Lower hardcoated polycarbonate transparent panel maximizes visibility around your unit.
- Upper portion composed of two tempered-glass sliding windows for unmatched air circulation and versatility.
- EC- and ROHVA-compliant for optimal safety, allowing you to remove the stock side protection bar for increased cabin space.
- Sealed contour allows for improved rider comfort in all weather.
- Lockable doors for peace of mind.

Half Doors

Traxter (2 doors)

715006314

Traxter MAX (4 doors)

715006316



- Half doors made of plastic.
- Metal frame for a higher level of fit and finish and rigidity.
- Rear hinge wide opening for ease of ingress/egress in the cockpit.
- Interior pockets and liners for more comfort.

Installation of some accessories shown may impact vehicle compliance with some regulations. Consult your local dealer for information.

Soft Doors

Traxter, Traxter MAX (all model years)

715008059 · 2 front doors

Traxter MAX 2018 & prior,
Traxter MAX 2022 & up (models produced
after January 18, 2021)

715006318 · 2 rear doors



- Weather-resistant soft doors reinforced with steel frame offer good protection from the elements.
- Made of heavy-duty UV-resistant canvas for excellent resistance to tear and abrasion.
- Rear hinge wide opening for ease of ingress/egress.
- Zip-down windows made of laminated polished vinyl material for added ventilation.
- Easily removable on hot sunny days.
- Compatible with roofs and mirrors.
- Soft Door Installation Kit (715006238/2X for MAX) is required for installation of 2019 & prior doors, on 2020 Traxter models.

Installation of some accessories shown may impact vehicle compliance with some regulations. Consult your local dealer for information.

NEW Front Deluxe Door Locks

Traxter, Traxter MAX

715009951



- Allows you to upgrade your deluxe doors with integrated door locks.
- Includes a pair of locks for front doors.
- Included on Deluxe Doors and Deluxe Cab kits 2025 and over.
- 2 keys included.

NEW Front & Rear Deluxe Door Locks

Traxter MAX

715009952



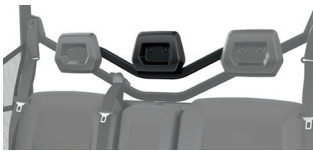
- Allows you to upgrade your deluxe doors with integrated door locks.
- Includes 4 locks for front and rear doors.
- Included on Deluxe Doors and Deluxe Cab kits 2025 and over.
- 2 keys included.

SEAT ACCESSORIES

Central Headrest

Traxter, Traxter MAX

715005163



- Headrest for front-center-seating position on 3-seated models and for rear-center-seating position on MAX models.
- Front Headrests are available separately for front passengers on MAX models.
- Headrests are required for all passengers on some regulated trails.
- Not EC compliant.

Headrests are required for all passengers on some regulated trails.

Front Headrests

Traxter MAX

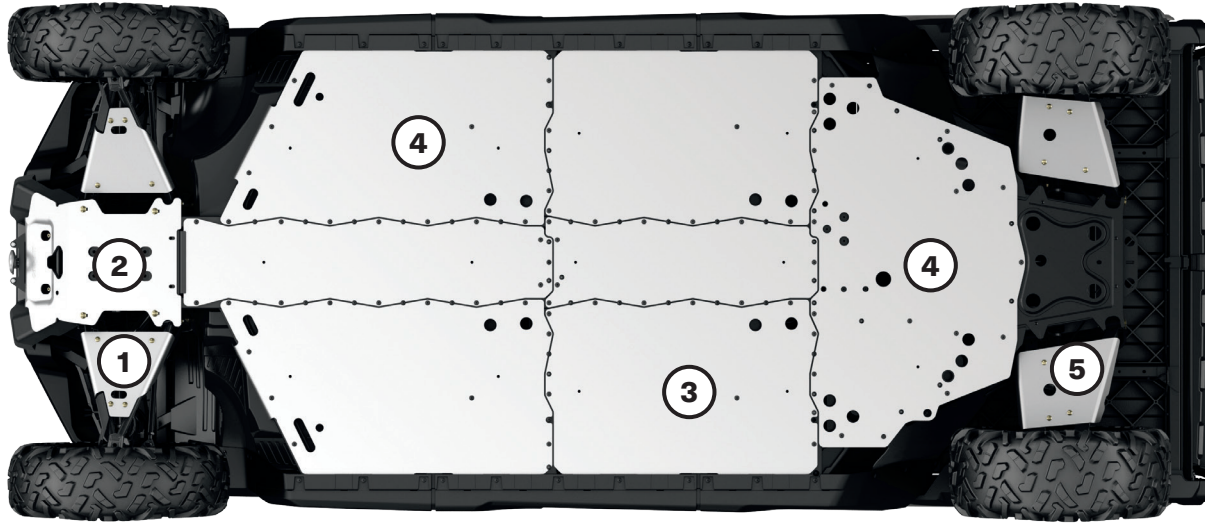
715005164



- Additional headrest for all three front-seating positions on MAX models.
- Central Headrest is available separately for rear-center-seating positions on MAX models.
- Headrests are required for all passengers on some regulated trails.
- Not EC compliant.

Headrests are required for all passengers on some regulated trails.

ALUMINUM SKID PLATES



For ultimate durability and strength, all our Aluminum Skid Plates are made with High Strength 5052 H32 Aluminum $\frac{3}{16}$ " (4.5 mm) thick.

- Ultimate durability
- High strength

TRAXTER, TRAXTER MAX

	2019 & prior		2020 & up		
	Base, DPS, XT, XT-P, XT Cab 2017 & prior & Hunting Edition	XT Cab 2018-2019, Lone Star Edition & X mr	62" Base, DPS (HD5, HD7, HD8, HD9), XT (HD7, HD8, HD9), XU (HD7 T-cat), PRO (HD8)	64" PRO (DPS, XT) or 6x6 (DPS, XT), DPS (HD10), XT (HD10), XT-P, XU (HD10 T-cat) 2021 & up, XU (HD9 T-cat)	65" XT Cab, DPS Cab, Hunting Edition, Lone Star Edition, Limited & X mr
Offer your Traxter the full protection kit or get parts individually					
Full Protection Kit					
Aluminum Skid Plate Protection Kit	715003711 (except MAX)	715006977 (3-up)	715006694 (except MAX)	715006696 (3-up & 6x6)	715006979 (3-up 2020 to 2021 only)
	715003712 (MAX only)	715006978 (MAX)	715006695 (MAX only)	715006697 (MAX & PRO)	715006980 (MAX 2020 to 2021 only)
Individual Aluminum Skid Plates					
1 Front A-Arm Protectors <ul style="list-style-type: none"> • Extra underside protection for your vehicle's steering mechanism and suspension (A-arm). • Sold in pairs. • Not compatible with Apache Track Systems. 	715008274	715006975	715008274	715008275	715008275 (2022 & up) 715006975 (2020 to 2021 only)
2 Front Skid Plate <ul style="list-style-type: none"> • Protects the front underside of your vehicle when riding in rough terrain conditions. • Adds style to the front of your vehicle. 	715002447	715002447	715002447	715002447	715002447
3 Central Skid Plate <ul style="list-style-type: none"> • Central Skid Plate Kit includes central and lateral skid plates. • Ultra-durable protection for the underside of your vehicle. • Makes work easy in more demanding terrain. • Must be used with Underbelly Skid Plate Kit. 	715003467 (MAX only)	715003467 (MAX only)	715003467 (MAX & PRO only)	715003467 (MAX & PRO only)	715003467 (MAX & PRO only)
4 Underbelly Skid Plate Kit <ul style="list-style-type: none"> • Ultra-durable protection for the underside of your vehicle. • Makes work easy in more demanding terrain. • Kit includes central, lateral and rear skid plates. 	715002446	715002446	715007982	715007982	715007982
5 Rear A-Arm Protectors <ul style="list-style-type: none"> • Extra underside protection for your vehicle's suspension (A-arm). • Sold in pairs. • Not compatible with Apache Track Systems. 	715002445	715006976	715002445	715004388	715004388 (2022 & up) 715006976 (2020 to 2021 only)

BUMPERS & GUARDS

Bumpers

Front Bumper	Traxter, Traxter MAX (2019 & prior)	715002418
	Traxter, Traxter MAX (2020 & up)	715005754



- Heavy-duty 1.5" (3.8 cm) diameter steel-tube construction.
- Provides enhanced protection.
- Inside and outside anti-corrosion coating with durable powder coat finish.
- Integrated mounting points for lights.
- Required to install the Xtreme Front Bumper Plates, Front Rack and the Front Corner Protectors.

Xtreme Front Bumper Plates	Traxter, Traxter MAX (2019 & prior) [†]	715003005
	Traxter, Traxter MAX (2020 & up) [‡]	715005777



- Made of high-strength heavy-gauge steel with rubber pads for increased protection.
- Inside and outside anti-corrosion coating with durable powder coat finish.
- Provide additional front-end protection.

[†]Require Front Bumper (715002418) for installation.

[‡]Require Front Bumper (715005754) for installation.

Installation of some accessories shown may impact vehicle compliance with some regulations. Consult your local dealer for information.

Front Corner Protectors	Traxter, Traxter MAX (2019 & prior) [†]	715002833
	Traxter, Traxter MAX (2020 & up) [‡]	715005774



- Heavy-duty 1.25" (3.2 cm) diameter steel-tube construction.
- Provide enhanced protection for front corners.
- Inside and outside anti-corrosion coating with durable powder coat finish.
- Sold in pairs.

[†]Require Front Bumper (715002418) for installation.

[‡]Require Front Bumper (715005754) for installation.

Rancher Front Bumper	Traxter, Traxter MAX	715005410
-----------------------------	----------------------	------------------



- The low front-end protection and plates allow you to use your vehicle within cattle herds and guard the safety of both the vehicle and the animals.
- The flat front portion facilitates gently prodding cattle or pushing light objects, e.g., closing a fence.
- The full frontage coverage extends to provide an extra layer of defense to your headlights and radiator.
- Inside and outside anti-corrosion coating with durable powder coat finish.
- Improved approach angle.
- Compatible with front rack, snow plows, tire and track kits, winches.

Installation of some accessories shown may impact vehicle compliance with some regulations. Consult your local dealer for information.

XT Front Bumper	Traxter, Traxter MAX (2019 & prior)	715004407
------------------------	-------------------------------------	------------------



- 1.5" (3.8 cm) diameter steel-tube construction.
- Provides light-duty protection.
- Inside and outside anti-corrosion coating with durable powder coat finish.
- Light-kit compatible.
- Standard on XT and XT Cab models 2018 and 2019.
- Not compatible with Xtreme Front Bumper Plates, Front Corner Protectors or LinQ Front Rack.

X mr Front Bumper	Traxter, Traxter MAX	715006143 · Black
--------------------------	----------------------	--------------------------



- Heavy-duty 1.5" (3.8 cm) diameter steel-tube construction.
- Inside and outside anti-corrosion coating with durable finish.
- Provides additional front body protection.
- Integrated winch support plate for winch relocation at a higher position for easier access in muddy conditions or for auxiliary lights.
- Includes a front tow hook.
- Standard on X mr models.
- Winch sold separately.

Cargo Bed Protectors & Tie Rails

Traxter 6x6 & PRO models

715005415



- Heavy-duty 1.5" (3.8 cm) diameter steel-tube construction.
- Reliable cargo box protection and tie-down attachment point to secure large loads.
- Anti-corrosion coating with durable powder coat finish.
- Designed to stay in place when cargo bed side walls are removed.

Rear Bumper

Traxter, Traxter MAX

715008109



- Heavy-duty 1.5" (3.8 cm) diameter steel construction and integrated tubular design.
- Increased protection of rear box and lower box corner while allowing normal tailgate function.
- Inside and outside anti-corrosion coating with durable powder-coat finish.
- Required to install Rear Body Side Protector (715003055).

Rear Bumper Adapter

(Not illustrated)

Traxter 6x6 & PRO models

715006060

- Required to install the Rear Bumper on Traxter models with the long box.

Rear Body Side Protectors

Traxter, Traxter MAX (except 6x6 & PRO)

715003055



- Heavy-duty 1.5" (3.8 cm) diameter steel-tube construction.
- Reliable cargo box protection.
- Inside and outside anti-corrosion coating with durable powder coat finish.
- Compatible with fender flares.
- Integrated brush and low-lying branch deflector.
- Require Rear Bumper for installation.
- Sold in pairs.

Body Side Protectors

Front Body Side Protectors

Traxter, Traxter MAX

715003450



- Heavy-duty 1.25" (3.2 cm) diameter steel-tube construction.
- Front side protection for farm, ranch and forestry applications.
- Offer complete front body protection.
- Inside and outside anti-corrosion coating with durable powder coat finish.
- Sold in pairs.
- Require Front Bumper (715002418 or 715005754) with Front Corner Protectors (715002833 or 715005774) and Rock Slider (715002569 or 715003040 for MAX models) for installation.

Front Rancher Body Side Protectors

Traxter, Traxter MAX

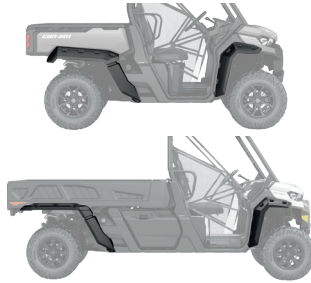
715003617



- Heavy-duty 1.25" (3.2 cm) diameter steel-tube construction.
- Front side protection for farm, ranch and forestry applications.
- Offer complete front body protection.
- Inside and outside anti-corrosion coating with durable powder coat finish.
- Sold in pairs.
- Require Rancher Bumper and Rock Sliders for installation.

Fender Flares

Fender Flares	Traxter (except 6x6 & PRO), Traxter MAX	715006821
	Traxter 6x6	715005409
	Traxter PRO	715006001



- Robust injection-molded polypropylene construction.
- Perfect for keeping mud and debris outside the vehicle.
- Include front and rear extension, and all mounting hardware.
- Ideal for track equipped vehicles.

Sport Fender Flares

Sport Fender Flares	Traxter (except 6x6 & PRO), Traxter MAX	715003898
----------------------------	---	------------------



- Sleek fender flares just the right size to reduce mud and debris kick-up from your tires.
- Robust injection-molded polypropylene construction.
- Include front and rear extension, and all mounting hardware.

Rock Sliders

Rock Sliders	Traxter	■ 715006671 · Black
	Traxter MAX, Traxter PRO	■ 715006721 · Black



- Heavy-duty rock sliders made of painted 3/8" (5 mm) aluminum with an integrated step for elevated cargo box access.
- Protect vehicle's sides and undercarriage against large obstacles.
- Lodge tight up against vehicle body for better clearance from obstacles.
- Not compatible with other rock sliders.
- Sold in pairs.
- Standard on Traxter X mr, Traxter MAX X mr and Traxter XT-P models.

Rock Sliders	Traxter, Traxter 6x6	715002569
	Traxter MAX, Traxter PRO	715003040



- Protect vehicle's sides and undercarriage against large obstacles.
- Made of heavy-duty 1.5" (3.8 cm) diameter steel tubing.
- Inside and outside anti-corrosion coating with durable powder coat finish.
- Integrated step for easy cargo box access.
- Sold in pairs.

Mud Flaps

Mud Flaps	Traxter, Traxter MAX	715003041
------------------	----------------------	------------------



- Keep mud and debris out of cargo area and protect trailer or vehicles behind you.
- Add aesthetic appeal to your vehicle.
- Made of EPDM rubber.
- Require Rear Bumper for installation.
- Sold in pairs.

LINQ: EASY ON, EASY OFF CARGO

TRAXTER'S LINQ ACCESSORIES

Mounting location and requirements

<ul style="list-style-type: none"> • No tools needed: Quickly install and remove accessories by hand. • Equip your Can-Am for specialized tasks in no time. • Sturdy mounting system that holds up to the roughest terrain. 	Cargo Bed (long box bed LinQ)	LinQ Cargo Rack 715006140	Adventure Roof Rack 715003870 / 715004391
LinQ Accessories with 16" Base <ul style="list-style-type: none"> • LinQ anchors mounted 16 inches apart, center-to-center. • Lower loading capacity than the LinQ with 36" base accessories. • Can be used on Can-Am ATV and SxS vehicles, Can-Am Spyder and Ryker vehicles, Sea-Doo watercraft and Ski-Doo snowmobiles. 			
LinQ 11.4 US Gal (43L) Cooler 715007825 • Black 715009276 • Gray	LinQ Base Installation Kit 715008125	No compatibility	No compatibility
LinQ 4.2 Gal Cooler 295100698 • White 219400964 • Black		LinQ Base Installation Kit 715008125	No compatibility
LinQ Tool Kit 715006829		No further requirements	No further requirements
LinQ Tool Box 715008111			
LinQ SR 5.5 Gal (21 L) Bag 860202449			
LinQ 4.5 Gal (17 L) Sport Bag 860202447			
LinQ Modular Box 715005494 • (10 L) 715007112 • (20 L) 715006830 • (30 L)			
LinQ Roll-Top Bag 715008110		No further requirements	No compatibility
LinQ Accessories with 36" Base <ul style="list-style-type: none"> • Mount on LinQ racks often used by Can-Am ORV vehicles. • Higher loading capacity than the LinQ with 16" base accessories. • Usage is limited to Can-Am ORV vehicles. 			
LinQ 12 Gal (45 L) Cargo Box 715003879	No compatibility	No further requirements	No further requirements
LinQ 23 Gal (86 L) Trunk Box 715004923			No compatibility
LinQ 11.5 Gal (43 L) Audio Cargo Box 715003018			No further requirements
LinQ 8 Gal (30 L) Cooler Box 715004778 • Black 715004698 • Gray		No further requirements	No compatibility
LinQ Premium Storage Bag by OGIO[®] 715002923 • Black		No further requirements	No further requirements
LinQ Heavy Duty Basket 715001215		No further requirements	No further requirements
LinQ Low Profile Basket 715004282		No further requirements	No further requirements
LinQ Holders			
LinQ Gear Grips 715005340	No further requirements	No further requirements	Side wall installation LinQ Adapters 715003058
LinQ Tool Holder 715007358			

LinQ Accessories with 16" Base

NEW LinQ 11.4 US Gal (43L) Cooler

Traxter, Traxter MAX

■ **715007825** · Black
■ **715009276** · Gray



- Versatile LinQ 16" configuration fits many vehicles.
- High quality injection-molded impact resistant polypropylene outer shell for exceptional durability.
- High quality insulation for optimal ice retention.
- Thicker insulation on bottom to isolate vehicle heat.
- 11.4 US gal (43L) capacity.
- LinQ-mounted for fast, easy, secure storage.
- Locks in place with only a quarter turn.
- Rigid handles make transportation easy.
- Horizontal locking handles allow installation of LinQ Lite accessories.
- Dry-basket included to protect items.
- Drain plug at the bottom to evacuate water.
- New ergonomic and secure latch system offers excellent sealing.
- Possibility to lock the cooler with a padlock.
- See table for installation location and requirements.

LinQ Modular Box

Traxter, Traxter MAX

715005494 · (10 L)

715007112 · (20 L)

715006830 · (30 L)



- Allows stacking of other modular boxes to always have the right gear accessible.
- Always have the right box size to fit everything.
- Can be installed on any LinQ base with a 16" width.
- See table for installation location and requirements.

Thermal Insert for LinQ Modular Box (10 L)

Traxter, Traxter MAX

219401110



- Insulated liner.
- Fits very well in the LinQ Modular Box (10 L).
- Can contain seven 355 ml cans.
- Keeps ice cold for one day.
- Interior dimensions: 9" L x 17" W x 2½" H.

LinQ Tool Box

Traxter, Traxter MAX

715008111



- High precision injected HDPE construction provides rigidity and durability.
- 5 gal (19 L) maximum capacity.
- Weather-resistant, sealed and lockable cover.
- Easy one-second on/off tool-less system.
- All the benefits of LinQ—simple, fast and secure.
- See table for installation location and requirements.

LinQ Tool Kit

Traxter, Traxter MAX

715006829



- Includes:
 - Cutter pliers
 - Long-nose pliers
 - Locking pliers
 - Ratchet wrench ¾" drive
 - 6" ratchet extension
 - Integrated CVT belt storage location (belt not included)
 - Long-socket 19 mm ¾" drive - 6 pts
 - Socket 18 mm ¾" drive
 - Long-socket 17 mm ¾" drive - 6 pts
 - Socket 15 mm ¾" drive
 - Socket 13 mm ¾" drive
 - Socket 10 mm ¾" drive
 - Socket 8 mm ¾" drive
 - Socket Torx T40 ¾" drive
 - Socket Torx T30 ¾" drive
 - Socket Torx T20 ¾" drive
 - Breaker bar ¾" drive
 - Combination Wrench set:
 - Wrench 19 mm
 - Wrench 18 mm
 - Wrench 15 mm
 - Wrench 13 mm
 - Wrench 10 mm
 - Wrench 8 mm
- See table for installation location and requirements.

LinQ 4.2 Gal (16 L) Cooler

Traxter, Traxter MAX

■ **219400964** · Black
■ **295100698** · White



- All the benefits of LinQ—simple, fast and secure.
- Rotomolded construction for exceptional rigidity and durability.
- Premium-quality foam insulation for optimal ice retention.
- Uses LinQ mounting system (Patent US 8777531 and US 8875830).
- Easy one-second on/off tool-less system.
- Can contain twenty 355 ml cans.
- Keeps ice cold for three days.
- Exterior dimensions: 13" L x 20" W x 10" H.
- Interior dimensions: 9" L x 17" W x 7" H.
- See table for installation location and requirements.

LinQ SR 5.5 Gal (21 L) Bag	Traxter, Traxter MAX	860202449
-----------------------------------	----------------------	------------------



- Semi-rigid expandable bag.
- All the benefits of LinQ—simple, fast and secure.
- Easy one-second on/off tool-less system.
- Requires LinQ Base Installation Kit.
- 5.5 gal (21 L) capacity.
- See table for installation location and requirements.

LinQ 4.5 Gal (17 L) Sport Bag	Traxter, Traxter MAX	860202447
--------------------------------------	----------------------	------------------



- All the benefits of LinQ—simple, fast and secure.
- 17 liter (4.5 US gallon) capacity.
- Thermoformed bag base in HDPE (High Density Polyethylene) providing rigidity and durability.
- Rigid bottom, semi-rigid top.
- Easy one-second on/off tool-less system.
- See table for installation location and requirements.

LinQ Roll-Top Bag	Traxter, Traxter MAX	715008110
--------------------------	----------------------	------------------



- Fully waterproof roll-top dry bag will securely store and confine your equipment.
- LinQ mounted using heavy-duty rigid plastic base.
- High capacity storage solution (40 L).
- Bottom foam liner for additional equipment protection.
- Integrated handle for easy transportation on/off the vehicle.
- Dimensions: 14" L x 19" W x adjustable H.
- See table for installation location and requirements.

LinQ Explorer Bag	Traxter, Traxter MAX	295101016
--------------------------	----------------------	------------------



- 26 gal (100 L) of watertight storage.
- Installs in seconds with tool-less LinQ accessory system.
- Dedicated essentials compartment for registration, license, insurance and more.
- Exclusive D.E.S.S. key storage.
- External quick-access pocket for small items like keys and wallets.
- Turns into a backpack when you get off your machine.
- Collapsible if not fully packed with straps on both sides.
- Dimensions: 26" L x 18" W x 14" H.

LinQ Accessories with 36" Base

LinQ 12 Gal (45 L) Cargo Box	Traxter, Traxter MAX	715003879
-------------------------------------	----------------------	------------------



- Holds cargo safely and securely while riding.
- LinQ mounted for easy-on, easy-off installation.
- See table for installation location and requirements.

LinQ 23 Gal (86 L) Trunk Box	Traxter, Traxter MAX	715004923
-------------------------------------	----------------------	------------------



- Lockable and weather-resistant.
- Holds cargo safely and securely while riding.
- See table for installation location and requirements.

LinQ 11.5 Gal (43 L) Audio Cargo Box	Traxter, Traxter MAX	715003018
---	----------------------	------------------



- An affordable and quick solution for adding music and storage to your next ride.
- The rear installation does not use up any cab space and allows easy listening at an average speed.
- Mounts on/off easily to hold/carry cargo safely and securely.
- The Bluetooth enabled receiver and 6.5" (16.5 cm) speakers are smartly concealed and integrated in the cover.
- Automatic shut-off function protects your battery by turning the system off after 10 minutes of inactivity.
- Backlit control panel perfect for night riding.
- Water-resistant speakers.
- See table for installation location and requirements.

LinQ 8 Gal (30 L) Cooler Box

Traxter, Traxter MAX

■ 715004698 · Gray
■ 715004778 · Black



- Installs without vehicle modification.
- Rotomolded construction provides exceptional rigidity and durability.
- Premium-quality foam insulation for optimal ice retention.
- Integrated, fully removable compartment protects food.
- Robust rubber latches keep the cover tightly closed.
- Weather-resistant.
- Convenient drain plug.
- See table for installation location and requirements.

LinQ Premium Storage Bag by OGIO

Traxter, Traxter MAX

■ 715002923 · Black



- Tool-less installation and removal thanks to the LinQ system.
- 17.2 gal (65 L) capacity semi-rigid cargo bag ideal for carrying anything you need on your vehicle.
- Buckle and elastic closure with a rubber seal that protects dust from entering the bag.
- 3-section lid for partial or full access to your bag.
- Inside separators for optimal bag organization.
- See table for installation location and requirements.

LinQ Heavy-Duty Basket

Traxter, Traxter MAX

715001215



- Made of high-strength, low-alloy steel.
- See table for installation location and requirements.

LinQ Low Profile Basket

Traxter, Traxter MAX

715004282



- Low profile, open basket increases cargo space.
- Perfect for easy access to tools, rope, winch and plow accessories.
- Multiple bungee cord and tie-down anchor points.
- Made of impact-resistant injected polypropylene.
- See table for installation location and requirements.

LinQ Tailgate Extension

Traxter, Traxter MAX
(except 6x6 and PRO models)
Traxter 6x6 & PRO

715002464
715005412



- Adds rear cargo capacity when the tailgate is open.
- Steel-tubing-system-style barrier mounts on top of the bed walls using the easy, tool-less LinQ system.
- Can be mounted to serve as cargo divider at different locations along the bed wall while preventing larger items from falling off the back.
- Stores neatly out of the way and offers additional cab area protection since it can be mounted upside down on the front bed wall as a mini headache rack.
- Anti-corrosion coating with durable powder coat finish.
- Not compatible with hard rear windows on Traxter MAX produced before January 2021.

LinQ Tire Holder

Traxter (except 6x6 & PRO models), Traxter MAX

715003448



- Cargo box spare-tire holder.
- Heavy-duty steel construction.
- Inside and outside anti-corrosion coating with durable powder coat finish.
- Mounts on top of the bed walls using the easy, tool-less LinQ system.
- Compatible with Bed Wall Extender.
- Uses BRP standard wheel bolt pattern to mount tire (nuts included).
- Accommodates BRP tires up to 28" (wheel not included).
- Quickly allows installation in multiple positions thanks to the LinQ system.

LinQ Cargo Rack

Traxter, Traxter MAX

715006140



- Strong, durable steel rack.
- Easy and tool-less installation thanks to the LinQ system.
- Allows the installation of LinQ accessories.
- 2 racks can be installed at the same time.
- Allows multi-level storage on cargo bed, accommodates 5 gal (19 L) bucket.
- Helps keep cargo securely in place.
- Multiple bungee cord and tie-down anchor points.
- Kit includes LinQ Base.
- Provides more usable space in the cargo box.

LinQ Front Rack

Traxter, Traxter MAX

715006064



- Rugged looking front rack mounts on top of vehicle hood and provides additional storage.
- Heavy-duty 1.25" (3.2 cm) diameter steel-tube construction.
- Inside and outside anti-corrosion coating with durable powder coat finish.
- Flip-up configuration provides easy access to service area.
- Allows the installation of LinQ accessories (especially for use with LinQ Low Profile Basket (715004282)).
- Kit includes LinQ Base.
- Multiple bungee cord and tie-down anchor points.
- Requires Rancher Bumper (715005410) or Front Bumper (715002418 or 715005754) for installation.
- A great place to store tools while working in the field.

LinQ Holders

LinQ Tool Holder

Traxter, Traxter MAX

715007358



- Ultra-versatile tool holder.
- Convenient swivel-latch allows tools to be stored in any orientation.
- Suitable for installation onto the cargo walls, Deluxe Headache Rack, Bed Wall Extender, Adventure Roof Rack and LinQ Loadout Rack.
- If mounted on the Deluxe Headache Rack or the Bed Wall Extender, LinQ Adapter is required for installation.
- Sold in pairs.

LinQ Gear Grips

Traxter, Traxter MAX

715005340



- Durable and flexible grips provide a custom fit for a variety of items from 1" to 4" (2.5 cm to 10 cm) in diameter.
- Heavy-duty design for carrying bows, fishing poles, rakes, farm tools and more.
- Quick-release button opens grip quickly for easy access to gear.
- Heavy-duty base system built for the toughest adventures.
- Make transporting your tools a snap by combining the Gear Grips with the LinQ system.
- 360° orientation.
- Sold in pairs.

LinQ Mounting

LinQ Adapter

Traxter, Traxter MAX

715003058



- Allows the installation of the LinQ Tool Holder to the Bed Wall Extender, Adventure Roof Rack or the Deluxe Headache Rack.
- Sold in pack of 4.

LinQ Lock

Traxter, Traxter MAX

860201968



- Simple way to securely lock most LinQ accessories.
- Lock cover protects lock from the elements.
- Corrosion resistant.
- Pack of 1, includes 2 keys.
- Not compatible with LinQ 4.2 US gal (16 L) Cooler, LinQ Tool Box, LinQ Tool Holder or LinQ Gear Grips.

LinQ Base Installation Kit

Traxter, Traxter MAX

715008125



- Unique mounting fastener usable on any LinQ system accessory.
- Included: 2 LinQ Cargo Bases and hardware.

LinQ Replacement Part

Traxter, Traxter MAX

715001707



- Unique mounting fastener usable on any LinQ system accessory.
- Tool-less installation and removal.
- Sold in pairs.

CARGO & STORAGE

Loadout Rack

Traxter, Traxter MAX

715005447



- LinQ installed versatile rack that creates a second level of storage.
- Adjustable height that goes from mid cab height to roof line.
- Modular basket adapts to different cargo with folding front and rear panels.
- Multiple hooks and holes to hang items both inside and outside the rack.
- Basket accommodates multiple LinQ positions.
- Combine with cargo net to create a hanging storage net below the basket for additional space.
- 2 racks can be installed on Traxter Pro and Traxter 6x6.

Hanging Storage Box Kit

Traxter, Traxter MAX

715005449



- Versatile rack designed to hold a standard storage box.
- Fully adjustable, the rack can be tailored to hold the crates in multiple positions: headache rack position, inside the box along the sidewall, and outside the box along the side wall.
- Includes Can-Am branded storage box.
- Exterior Cargo Reinforcement Panel is recommended when used outside of bed wall.

Can-Am Storage Box

(Not illustrated)

Traxter, Traxter MAX

708303237

- Conventional 13" x 13" plastic storage box with Can-Am branding.
- Perforated bottom allows water and debris to escape.

Exterior Cargo Reinforcement Panel

(Not illustrated)

715006198

- Plate that attaches to the bed side to further support and protect bed wall when in outward position.
- Recommended use of the hanging storage box and/or gun and tool holder when installed outside of the bed wall (except Traxter 6x6 & PRO).

Deluxe Headache Rack

Traxter, Traxter MAX

715002423



- Protects cab components from cargo load.
- Increases box capacity when used in tandem with the Bed Wall Extender (715002421).
- Required to install the Bed Wall Extender (715002421).
- Compatible with gear rail.

Bed Wall Extender

Traxter,
Traxter MAX
(except Traxter 6x6 & Traxter PRO)
Traxter 6x6 & PRO models

715002421

715005411



- Increases box capacity.
- Quick and easy tool-less modularity.
- Easily removable rear door can be latched open.
- Variable full or half height settings.
- Foldable top panels come off in seconds.
- Requires Deluxe Headache Rack (715002423).

Tonneau Cover

Traxter 2018 & up (except Mossy Oak
Break-Up Country Camo models),
Traxter MAX (except 6x6 and PRO models)

715008306



- Fitted to cover all of the items in your cargo box thoroughly.
- Prevents splash from entering the cargo box.
- Rolls up to the front.
- Easily removable for quick access.
- Not compatible with accessories that exceed the box height.

Removable Storage Bin

Traxter, Traxter MAX

715004344



- Handy, removable on-dash tool box will make sure you have your critical equipment where you need it.
- Provides 1.7 gal (6.3 L) of storage and clips on and off in a snap.
- Water-resistant to ensure your contents remain safe and dry.
- Standard on all models except Base.

Removable Storage Bin – Passenger

Traxter, Traxter MAX

715003314



- Convenient passenger-side underseat storage.
- Polypropylene-injected 3.7 gal (14 L) storage capacity bin.
- Bin installs and removes in a snap and comes with an integrated handle.
- Water-resistant.

Driver Underseat Storage Bin

Traxter, Traxter MAX

715003399



- Polypropylene-injected 4 gal (15 L) capacity bin fits securely under the driver's seat.
- Front opening for quick and easy access.
- Ideal for storing weather-resistant items, such as ropes, tow straps and winch accessories that are needed at a moment's notice.

Center Underseat Storage Bin

Traxter, Traxter MAX

715003446



- Polypropylene-injected 2 gal (8 L) capacity storage bin.
- Watertight design keeps ice and drinks cold.
- Easy to drain and wash by removing it with integrated handle.
- Accessible by lifting center seat section.

Cargo Bed Rails

Traxter (except 6x6 & PRO), Traxter MAX

715003444



- Add integrated tie-down area to your cargo box while enhancing the look.
- Added cargo box protection.
- Inside and outside anti-corrosion coating with durable powder coat finish.
- Heavy-duty 1" (2.5 cm) diameter steel-tube construction.
- Add height to the bed side wall and serve as a tie-down anchor for ropes, straps or bungees.
- Not compatible with Bed Wall Extender.
- Sold in pairs.

Cargo Bed Net

Traxter (except 6x6 & PRO), Traxter MAX

715003445



- Solid net designed to hook to the bottom of the cargo box for secure and compact confinement of your cargo.
- Keeps items tightly against the bed floor.

Dash Storage Compartment Net for Heating System

Traxter, Traxter MAX (2019 & prior)

715003544



- Perfect for securing items in the dash storage area.
- To be installed when Lower Dashboard for Heating System is installed.

Lower Dashboard for Heating System

Traxter, Traxter MAX (2019 & prior)

715003441



- Replaces the dashboard that comes stock with the vehicle, and features a tablet that makes it possible for driver and passenger to conveniently store small items in the dash.
- To be installed when the Defrost, Heat & Ventilation System is installed.
- Use together with the Dash Storage Compartment Net for Heating System (715003544) to prevent the items placed in the dash storage compartment from falling.

Dash Storage Compartment Nets

Traxter, Traxter MAX
(except Limited models)

715003129



- Perfect for securing items in the dash storage area.
- Not compatible with Defrost, Heat & Ventilation System.
- Sold in pairs.

Bed Tool Box

Traxter, Traxter MAX

715003028



- Large 40 gal (150 L) multifunction weather-resistant tool box designed for cargo beds.
- Rotomolded construction provides exceptional rigidity and durability.
- Features cup holders and integrated groove for pipe or 2x4 cutting.
- Sized to give you the option of installing 2 tool boxes in the cargo bed (quick bolt-on installation).
- Double side openings with lockable covers and rubber latches.

Soft Storage Bag

Traxter, Traxter MAX

715003759



- 11.8 gal (45 L) capacity soft cargo bag designed with vehicle's rear in mind to maximize potential storage.
- 3 sections.
- Weatherproof.

Backrest Rear Storage

Traxter MAX

715003019



- Netting installs easily.
- Made from polyester that won't discolor.
- Sold in pairs.

Storage 2.6 Gal (10 L) Bag

Traxter, Traxter MAX

269502121



- Roll-top dry bag for fully protecting your cargo from the elements.

Passenger Storage Seat Bag

Traxter, Traxter MAX

715008080



- This weather-resistant bag holds your gear safely and securely while you ride.
- Bag settling on the passenger seat to increase the vehicle's cargo capacity.
- This bag features a 14.5 gal (55 L) storage capacity and is divided into two compartments.
- The top compartment is insulated to keep your beverages cold and includes two cup holders.
- Additional pocket inside for additional storage, such as a cell phone.
- The bottom compartment is accessible from both sides and serves as a large pocket for storing various items.
- The detachable pocket at the front of the bag can be used as a garbage bag.

RACKS & HOLDERS

Rear Accessory Bar

Traxter, Traxter MAX

715005450



- Strong accessory bar allowing installation or hanging items off the back.
- Holes for carabiners, duck decoy hangers or other items.
- LinQ anchors allow installation of many LinQ accessories.

Adventure Roof Rack

Traxter
Loads of up to 40 lb (18 kg).
Traxter MAX
Loads of up to 75 lb (34 kg).

715003870

715004391



- Ideal cargo solution for packing everything you need to live your off-road experience fully and completely.
- Built with heavy-duty 1.25" (3.2 cm) diameter steel tubing.
- Modular LinQ support plates allow for installation of most LinQ cargo accessories.
- Integrated mounting points for lights can hold up to 8 pod-type LED lights (6 front and 2 back) or a 39" (99 cm) LED bar (front)—see table for compatibility.
- Features anchor points for spare tire attachment.
- Spare Tire Tie-Downs sold separately.
- Add the Cargo Box Net or the Cargo Box Elastic Net to secure and confine your cargo in the rack.
- Not compatible with Bimini Roof or Audio Roof.

Spare Tire Ratchet Tie-Downs

Traxter, Traxter MAX

280000955



- 3-way ratcheting tie-down strap with loop ends.
- Designed to securely hold spare tires on accessories equipped with integrated spare tire attachment points.
- Adjustable to accommodate most common UTV tire sizes.
- Ratchet and junction ring made of durable zinc-plated steel.
- Required for spare tire attachment on Adventure Roof Rack.

LinQ Tool & Gun Holder

Traxter, Traxter MAX

715005466



- 2-in-1 holding rack can be used both on the job or on the hunt.
- Includes 5 locations to securely hold tools and guns using rubber grips and retention straps at the top and a rubber mat with gunstock shaped molding at the bottom.
- Easy to remove, install or reposition using our simple and secure LinQ system.
- Can be attached at multiple positions along the cargo bed walls, facing inside or outside the bed.
- Recommended to use with the Exterior Cargo Reinforcement Panel (715006198) when installed outside the bed wall.

LinQ Gun Case

Traxter, Traxter MAX

715009240



- Practical design allows you to store shotguns and rifles up to 52" (132 cm) even with most optic configurations.
- Adapts to different weapon shapes and features with foam cushions that can be repositioned.
- LinQ-mounted for efficient and secure storage, locked in place with only a quarter turn.
- LinQ Gun Case Mounting Kit (715006443) is required for installation.

LinQ Gun Case Mounting Kit

Traxter, Traxter MAX

715006443



- Required to install the LinQ Gun Case on a Traxter and Traxter MAX.
- Allows you to install up to two LinQ gun cases.
- Includes one pair.

Gun Boot 6.0⁺ Impact by Kolpin[†]

Traxter, Traxter MAX

715001419



- Extra room for pistol-grip-type weapons and small bipods.
- Easily fits firearms up to 51" (1.3 m) in total length.
- Provides ample room for 2.4" (60 mm) scopes.
- Hatchback design allows easy access.
- Snap-close cover with locking capability.
- Ergonomically designed handle and molded attachment points for sling.
- Designed to accommodate left- and right-hand bolt-action rifles and shotguns.
- Requires Gear Rail and Gun Boot Mount by Kolpin for installation.
- Includes removable, shock-absorbing foam and nylon Impact liner for superior interior protection.
- Compatible for dual mount with additional Gun Boot Mount.

Gun Boot Mount by Kolpin

Traxter, Traxter MAX

715001420



- Fits one Kolpin Gun Boot 6.0 Impact.
- Lightweight and extremely durable.
- Easily adjustable without the use of any tools.
- Offers precision gun angle adjustability.
- Requires Gear Rail for installation.

Dual Gun Holder

Traxter, Traxter MAX

715005265

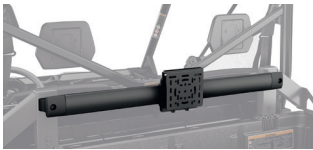


- Accommodates shotguns, rifles or muzzleloaders.
- Mounts in the cab, on floor board between driver and passenger.
- Rubber pads provide gun protection.
- Can be removed to allow a center passenger.
- Anti-corrosion coating with durable powder coat finish.
- Comes with all hardware for easy installation.
- Keeps your weapons within easy reach and protected within the cab area.
- Refer to your local regulations governing the transportation of firearms before purchase.

Gear Rail

Traxter, Traxter MAX
(except X mr models)

715003391



- Stationary rail system specially designed for your side-by-side vehicle.
- Universal mounting options for many Kolpin accessories like Gear Grips and Universal Saw Press.
- Rail is made with heavy-duty 7-gauge extruded anodized black aluminum.
- Mounts on roll bar.
- Includes one versatile Gear Rail Mount by Kolpin.
- Requires Deluxe Headache Rack (715002423) or Gear Rail Adapter (715003392).

Gear Rail Adapter

Traxter, Traxter MAX
(except X mr models)

715003392



- Allows the installation of gear rails directly onto the cargo box without the need for a headache rack.

Gear Rail Mount by Kolpin

Traxter, Traxter MAX

715001422



- Accessory bracket for mounting additional accessories to the Gear Rail.
- Includes C-clamp and metal mounting brackets.

Double Gun Bag

Traxter (except XT Cab, X mr models),
Traxter MAX (except XT Cab and Limited
package)

■ 715003133 · Black



- Shell constructed with heavy-duty, weather-resistant polyester to shelter guns from dust and other outdoor elements, while the thick interior padding protects the guns from shocks.
- Fits perfectly on rear cage and guns are readily accessible from both sides of vehicle.
- Design features include a removable center pocket that can be mounted on both sides of the bag and extra front storage pockets for hunting gear.
- Solid, quick installation.
- Not compatible with rear wind protection, headache racks and gear rails.
- May interfere with the tilt function of the Traxter 6x6 or Traxter PRO models' beds.

Universal Saw Press by Kolpin

Traxter, Traxter MAX
(except X mr models)

715001423



- Specially crafted for transporting your chainsaw securely and safely aboard your side-by-side vehicle.
- Heavy-duty, black powder-coated metal bracket designed to attach any chainsaw model with up to a 20" (51 cm) bar.
- Rubber pads provide cushion and tight fit.
- Hinged design for quick removal.
- Holds saw in vertical position or 45° angle in either direction.
- Requires Gear Rail.
- Protective sheath included.

LinQ Gear Grips

Traxter, Traxter MAX

715001421



- Durable, flexible grips cushion and protect while providing a custom fit for a variety of items from 1" to 4" (2.5 cm to 10 cm) in diameter.
- Heavy-duty design for carrying bows, fishing poles, rakes, farm tools and more.
- Quick-release button opens grip quickly for easy access to gear.
- Heavy-duty base system built for the toughest adventures.
- Easy installation on tubular racks, extension racks, brackets or bumpers.
- Sold in pairs.

LIGHTS

1 Choose your mount point		2 Find your platform		3 Choose your lights		
		10" (25 cm) Double Stacked LED Bar	15" (38 cm) Double Stacked LED Bar	39" (99 cm) Double Stacked LED Bar	4" (10 cm) Round LED LIGHTS (Sold in pairs)	3.5" (9 cm) LED Lights (Sold in pairs)
Front Bumper Rancher Bumper XT Front Bumper X mr Front Bumper (w/o winch) X-TP Front Bumper	Traxter Traxter MAX 2019 & prior	715002933 PLUS 715002454 (Light Power Cable)	715002934 PLUS 715002454 (Light Power Cable)	N/A	715002935 (4" Round), 715009774 (3.5" Flood) or 715003666 (3.5" Spot) PLUS 715002454 (Light Power Cable)	
	Traxter Traxter MAX 2020 & up	715002933 PLUS 715006034 (Light Power Cable)	715002934 PLUS 715006034 (Light Power Cable)		715002935 (4" Round), 715009774 (3.5" Flood) or 715003666 (3.5" Spot) PLUS 715006034 (Light Power Cable)	
Light Rack or Light Bars <i>*Roof Power Cable and Front Roof Liner may not be required if already installed with other accessories.</i>	Traxter & Traxter MAX (except XT Cab)	715002933 PLUS 715003094 (Roof Power Cable) & 715008226 (Front Roof Liner)	715002934 PLUS 715003094 (Roof Power Cable) & 715008226 (Front Roof Liner)	715006226 (Light Bar Support) PLUS 715004007 (39" Light Bar) PLUS 715005822 (Power Cable) & 715008226 (Front Roof Liner)	715002935 (4" Round), 715009774 (3.5" Flood) or 715003666 (3.5" Spot) PLUS 715003094 (Roof Power Cable) & 715008226 (Front Roof Liner)	
	Traxter Traxter MAX XT Cab Limited	715002933	715002934	715006226 (Light Bar Support) PLUS 715004007 (39" Light Bar) PLUS 715005822 (Power Cable)	715002935 (4" Round), 715009774 (3.5" Flood) or 715003666 (3.5" Spot)	
Adventure Roof Rack <i>*Roof Power Cable may not be required if already installed with other accessories.</i>	Traxter & Traxter MAX (except XT Cab Limited)	N/A	Front only: 715002934 PLUS 715003417 (Power Cable) & 715003094 (Roof Power Cable) & 715008226 (Front Roof Liner)	Front only: 715004007 PLUS 715005822 (Power Cable) & 715003094 (Roof Power Cable) & 715008226 (Front Roof Liner)	Front or Rear: 715002935 (4" Round), 715009774 (3.5" Flood) or 715003666 (3.5" Spot) PLUS 715003417 (Power Cable) & 715003094 (Roof Power Cable) & 715008226 (Front Roof Liner)	
	Traxter, Traxter MAX XT Cab Limited		Front only: 715002934 PLUS 715003417 (Power Cable)	Front only: 715004007 PLUS 715005822 (Power Cable)	Front or Rear: 715002935 (4" Round), 715009774 (3.5" Flood) or 715003666 (3.5" Spot) PLUS 715003417 (Power Cable)	

4 Order **Order all part numbers in intersecting box**
**Note: When installing more than one light kit, additional light power cable or mounting kit is required.*

Roof Power Cable <i>(Not illustrated)</i>	Traxter, Traxter MAX	715003094
<ul style="list-style-type: none"> • Required for installation of some electrical accessories. • Brings power from the battery. 		
Light Kit Power Cable <i>(Not illustrated)</i>	Traxter, Traxter MAX (2019 & prior) Traxter, Traxter MAX (2020 & up)	715002454 715006034
<ul style="list-style-type: none"> • Power cable for installation of compatible Can-Am light kits at front bumper location. 		

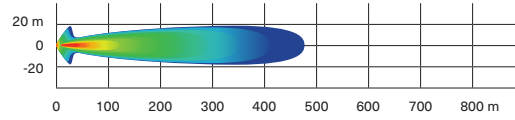
10" (25 cm) Double Stacked LED Light Bar (60 W)

Traxter, Traxter MAX

715002933



5,400 lumens



- Equipped with twelve 5 W Cree LEDs.
- 5,400 lumens.
- Packs a big punch for its size.
- Rugged and waterproof.
- Can be installed on front bumpers, sport roof and Bimini roof with sun visor.

- Requires light power cable for installation.
- Lights up to more than 1,500 ft (460 m) in front of the vehicle and around 65 ft (20 m) wide on each side.
- Not EC compliant.
- See table for installation location and requirements.

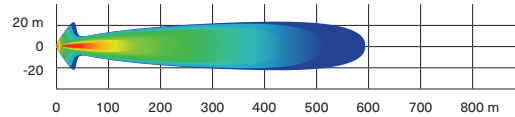
15" (38 cm) Double Stacked LED Light Bar (90 W)

Traxter, Traxter MAX

715002934



8,400 lumens



- Equipped with 18 5 W Cree LEDs.
- 8,400 lumens.
- Complements the Light Racks and most bumpers.
- Rugged and waterproof.

- Lights up to more than 1,900 ft (580 m) in front of the vehicle and around 65 ft (20 m) wide on each side.
- Not EC compliant.
- See table for installation location and requirements.

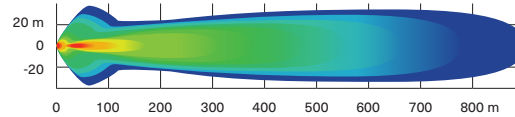
39" (99 cm) Double Stacked LED Light Bar (270 W)

Traxter, Traxter MAX

715004007



24,300 lumens



- Equipped with 54 5 W Cree LEDs.
- 24,300 lumens.
- Lights up to more than 2,900 ft (900 m) in front of the vehicle and around 115 ft (35 m) wide on each side.

- Compatible on the Adventure Roof Rack.
- Compatible with Flip Windshields and Full Windshields.
- See table for installation location and requirements.
- Not EC compliant

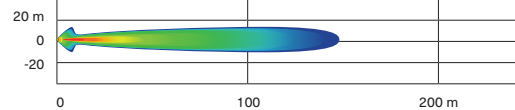
4" (10 cm) Round LED Lights (2 x 25 W)

Traxter, Traxter MAX

715002935



1,800 lumens



- 25 W LED spotlights.
- 1,800 lumens.
- Rugged and waterproof.
- Includes basic wiring and switch.
- Can-Am branded grill.

- Requires light power cable.
- Sold in pairs.
- Not EC compliant.
- See table for installation location and requirements.

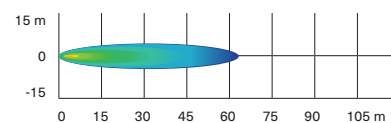
3.5" (9 cm) LED Driving Lights (2 x 14 W)

Traxter, Traxter MAX

715009775



1,260 lumens



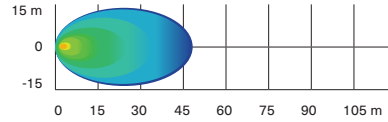
- 14 W LED lights producing 1,260 lumens each.
- Spot lens for a narrow and long light beam spread, ideal when driving at higher speeds.
- Equipped with six high-power LEDs in a heavy-duty die-cast aluminum housing.

- Features two attachment points. If one attachment point fails due to a collision, rotate to the next channel point and remount the light.
- Sold in pairs.
- ECE certified.
- See table for installation location and requirements.

3.5" (9 cm) LED Flood Lights (2 x 14 W)

Traxter, Traxter MAX

715009774



- 14 W LED lights producing 1,260 lumens each.
- Flood lens for a wide light beam spread, ideal for working applications like plowing or cornering. Suitable for dusty or foggy riding conditions.
- Equipped with six high-power LEDs in a heavy-duty die-cast aluminum housing.

- Features two attachment points. If one attachment point fails due to a collision, rotate to the next channel point and remount the light.
- Sold in pairs.
- ECE certified.
- See table for installation location and requirements.

Light Bar Support

Traxter, Traxter MAX

715006226



- Mounting Bracket that allows the installation of the Can-Am 39" Lightbar (715004007).
- Low and forward mounting position for a sleek look.
- Compatible with all windshields, roofs and doors.
- This accessory is not compatible with the Can-Am Audio Roof (715005206) or Can-Am Max Audio Roof (715006879).

Light Rack

Traxter, Traxter MAX

715002456



- Rugged steel construction serves as both mount and protection for accessory light systems.
- Lights not included.
- Front Roof Liner is required for installation on the roof (except Cab models or with Deluxe Sport Roof).
- Power Cable, Sport Roof, Deluxe Sport Roof or Sport Roof for MAX required for installation.
- Integrates elegantly and seamlessly into our roof products.

Rear Cargo Light

Traxter, Traxter MAX (2020 & up)

715007077



- Powerful 55W H3 illumination for rear cargo area.
- Convenient in-dash switch.
- Wiring included.
- Sport Roof (715002430) or Sport Roof for MAX (715003038) is required for installation.
- Not EC compliant.
- Not compatible with headache rack on Traxter Pro and Traxter 6x6.

RAM[®] LED Spotlight

Traxter, Traxter MAX (2019 & prior)

710005423



- 540 lumen (9 watt) heavy-duty LED spotlight standard-equipped with 1" (2.5 cm) diameter rubber-coated double ball and socket system.

Installation of some accessories shown may impact vehicle compliance with some regulations. Consult your local dealer for information.

Dome Light

Traxter, Traxter MAX

715002455



- LED array integrates perfectly with vehicle.
- Wiring included.
- Can be installed on cage or roof, with or without roof liner.
- Not compatible with Traxter Audio Roofs.

LED Signature Lights

Traxter, Traxter MAX (2020 & up)

715006896



- The stylish LED set puts the finishing touch to your Traxter, accentuating its aggressive stance.
- Included on Limited and Lone Star models.

Installation of some accessories shown may impact vehicle compliance with some regulations. Consult your local dealer for information.

AUDIO & COMMUNICATION SYSTEMS

Can-Am Audio Roof	Traxter	715005206
	<ul style="list-style-type: none"> • Full roof with sleek built-in audio. • Fully sealed and waterproof. • Easy to install: one wire connects the roof to the vehicle's electronics. • Four 7.7" speakers, one 280 watt amplifier, and one weatherproof source unit supplied by JL Audio[®]. • Speakers include LED lighting integrated into the grille, designed to uniformly illuminate with an RGB glow. • A 3" full-color LCD display, with separate day/night lighting themes for visibility, even in bright sunshine. • AM/FM tuner. 	<ul style="list-style-type: none"> • To install the Audio Roof with the following accessories, the Power Harnesses 715003094 and 715008781 are required: Flip Glass Windshield With Wiper and Washer Kit (715002441), Windshield Wiper and Washer Kit (715001638), Front Deluxe Full Doors (715009906), Rear Deluxe Full Doors (715009907). • Not compatible with Adventure Roof Rack or Headache Rack. • Not compatible with 39 in. (99 cm) Double Stacked LED Light Bar (270 W) (715004007) and Light Bar Support (715006226).
Can-Am Audio Roof MAX	Traxter MAX	715006879
	<ul style="list-style-type: none"> • Full roof with premium JL Audio system for Traxter MAX. • Fully sealed and waterproof components and construction. • Simple to install: one connector connects the roof to the vehicle's electrical system. • Weatherproof components: Six 7.7" coaxial speakers, 280 watt amplifier and 70 watt Mediamaster[®] source unit. • AM/FM tuner. • Expertly tuned for exceptional sound on the move in your Traxter MAX. • Speakers include adjustable RGB LED cone illumination, controlled via an app on your smartphone. • Mediamaster[®] source unit equipped with 3" full-color LCD display, with day/night lighting modes. 	<ul style="list-style-type: none"> • Designed to not drain the battery. • Specific to the type of riding. • To install the Audio Roof with the following accessories, the Power Harnesses 715003094 & 715008781 are required: Flip Glass Windshield With Wiper & Washer Kit (715002441), Windshield Wiper & Washer Kit (715001638), Front Deluxe Full Doors (715009906), Rear Deluxe Full Doors (715009907). • Not compatible with Adventure Roof Rack. • Not compatible with 39 in. (99 cm) Double Stacked LED Light Bar (270 W) (715004007) & Light Bar Support (715006226).
NEW Can-Am JL Audio Subwoofer & Amplifier Kit	Traxter, Traxter MAX	715010050 715010342 - Sub only
	<ul style="list-style-type: none"> • Orchestrated for outstanding sound quality and calibrated to enhance your audio experience. • Designed to be tough in the most demanding riding conditions. • Easy to install, this 10" (254 mm) under-seat 250 W subwoofer enhances both the driver's and the passenger's experience. • Includes the MX 500/1 amplifier with 715010050. • When combined with the Can-Am Audio Roof (715005206) or with the Can-Am Audio Roof MAX (715006879), this premium JL Audio component creates the ultimate sound experience (only compatible with JL Audio Roofs). 	
NEW Can-Am Audio Roof Flip Kit	Traxter, Traxter MAX	715007133
	<ul style="list-style-type: none"> • Combines with Can-Am Audio Roofs (715005206 & 715006879) for Flip option. • Not compatible with the Roof Rack. • Compatible with LED Light Bar when installed directly on the Audio Roof. 	
Wetsound Stealth XT 6 Can-Am Edition Sound Bar	Traxter, Traxter MAX	715008282
	<ul style="list-style-type: none"> • Built-in Bluetooth connectivity with source control. • Built-in Broadcast mode. • Backlit control panel with Integrated LED RGB cabin lights. • Integrated LED Dome. • IP67 rated RF wireless remote control. • 3.5 aux input/output. • Built-in 300 W Class D Amplifier. 	<ul style="list-style-type: none"> • 4 marine-rated 3" full range drivers. • 2 marine-rated 1" tweeters. • Operating voltage: 12 V. • IP rated: IP67. • Length: 21.31" • Width: 4.04" • Height: 3.85" • Sound Bar Mounting Kit required for installation.

Sound Bar Mounting Kit

Traxter, Traxter MAX

715007840



- Required to install the Wetsound Stealth XT 6 Can-Am Edition Sound Bar on a Traxter and Traxter MAX.

Overhead Audio System



- Rugged waterproof Jensen¹ Bluetooth Stereo Audio System offers multi-source input: AM/FM/WB and USB (iPod[®] and iPhone[®] ready).
- Convenient white LED-backlit LCD display and buttons.
- Stream from any Bluetooth-enabled device (smartphone, MP3 player).
- Powerful 4x40W amplifier with remote turn-on.
- Voice-control of AVRCP-active device.
- 30 programmable AM/FM stations with auto-store/pre-set scan.
- Separate RCA audio output and input.
- UV-resistant finish/corrosion-resistant components.
- Requires Sport Roof (715002430) or Front Roof Liner (715008226) and Power Cable (715003094).

NEW Complete Overhead Audio System

Traxter, Traxter MAX

715009764

- Complete with 4 ultra-sturdy outdoor speakers (2 front and 2 rear) and 4 black speaker boxes.

NEW Overhead Front Audio System

Traxter, Traxter MAX

715009765

- Complete with 2 ultra-sturdy front outdoor speakers and black speaker box.

ELECTRONIC ACCESSORIES

Back-Up Monitor and Camera Kit

Traxter, Traxter MAX

715003834



- Fully waterproof rear view camera and monitor kit.
- The camera is one of the clearest and sharpest available on the market, with 250,000 pixel image resolution and a 2.1 mm lens with 130° viewing angle.
- Features 18 infrared lights that allow up to 50 ft. (15.24 m) visibility in complete darkness, an auto iris sensor that adapts to light intensity changes and an adjustable sunshade.
- 7" (17.78 cm) digital TFT LCD color monitor comes with power harness and can support up to two camera inputs.
- The camera can be roof mounted to monitor your cargo load or to see farther behind, and it can be mounted under the cargo box for hitching purpose.
- Not compatible with Defrost Heat and Ventilation System or HVAC.

Power Tilt Bed

Traxter (except 6x6), Traxter MAX (2020 & up), Traxter PRO

715007096

Traxter 6x6

715007204



- Powerful cargo box tilter with dash-integrated switch.
- Electrical actuated hydraulics for a strong and quick tilting system.

C-TEK charger

860200997



- CTEK, the manufacturer of the smartest battery chargers in the world, has produced a BRP specific charger for all BRP products.
- Charger is built to meet the demanding arctic conditions.
- Ask your dealer for more information.

3-Mode Switch

Traxter, Traxter MAX (2019 & prior)

715004445



- Switches quickly and conveniently between Normal/Work/Eco modes.
- Work mode: Reduced throttle sensitivity for smoother acceleration and reduced load impact.
- Eco mode: Increased fuel economy.
- In-dash plug-and-play mount.

Cellphone Holder

Traxter, Traxter MAX

715008786



- Water resistant door allows for perfect phone positioning.
- Features capacitive and resistive touch screen technology.
- Spring system in back plate automatically adjusts for thickness.
- Fits all cellphones within 7.2" (185 mm) x 3.3" (85 mm) x 0.6" (15 mm) dimensions.
- Works with almost all charger wires.
- Does not include cellphone or charging wires.
- Requires the RAM GPS Mount (715003325) bolted directly on the dashboard for the Cellphone Holder to be supported.

RAM GPS Mount

715003325



- Allows for GPS integration onto vehicle.
- Standard AMPS hole pattern for Garmin Cradle.

Digitally Encoded Security System (D.E.S.S.™) Keys

Traxter, Traxter MAX (2023 & prior), Traxter & Traxter MAX 2024 (with HD9 & HD10 engine)

715002458



- Top-security anti-theft protection for your vehicle.
- Encrypted chip technology restricts access to your vehicle's electronic ignition system.
- One vehicle/one code.
- A vibration/shock-resistant ball-and-socket design that ensures a reliable connection.
- 3 programmable modes:
 - Work mode: Limits vehicle speed to 40 kph (25 mph) but does not limit engine torque.
 - Normal mode: Limits vehicle speed to 70 kph (44 mph) and 50% torque reduction.
 - Performance mode: No restrictions.

Digitally Encoded Security System (D.E.S.S.™) Keys

Traxter, Traxter MAX 2024 (with HD7 engine)

715009300



- Top-security anti-theft protection for Can-Am vehicles.
- The encrypted chip technology restricts access to the unit's electronic ignition system.
- One code per vehicle.
- Features a vibration/shock-resistant ball-and-socket design that ensures a reliable connection.
- Comes with three programmable keys, including:
 - Work key: configurable vehicle speed limit between 30 kph (18 mph) and maximum vehicle speed that does not limit engine torque.
 - Normal key: limits vehicle speed to 70 kph (44 mph) and 10% torque reduction on Traxter models.
 - Performance key: no restrictions.

Auxiliary Battery Installation Kit

Traxter, Traxter MAX (2019 & prior)
Traxter, Traxter MAX (2020 & up)

715003758

715006035



- Allows you to add a second 30Ah battery for that dual battery setup that will give you the extra juice you'll need to power auxiliary electrical components like a sound system or winch.
- Additional battery sold separately (515176151).
- Equipped with an integrated smart battery isolator that will prevent your auxiliary electrical components from draining your starting battery.
- Kit includes an additional battery junction block, all necessary wiring and the battery holder.

USB Power Outlet Kit

Traxter, Traxter MAX (2020 & up)

219400510



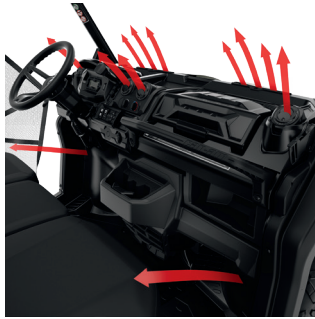
- Recharges your electronic devices while riding* (smartphone, MP3, heating gear, etc.).
- Dual port USB connectors.

**The power outlet is not capable of recharging all device types while riding.*

Defrost, Heat & Ventilation System

Traxter, Traxter MAX 2019 & prior
(not compatible with HD5 Motorization)

715004917



- Best integrated system on the market with 3-ventilation speed and in-dash adjustable temperature.
- Adjustable/directional vents.
- 10 vents specially positioned for better windshield and side windows defrosting/deicing, foot and hand heat.
- Easy-service air filter.
- Once installed, you might want to add storage space with the Lower Dashboard for Heating System and Dash Storage Compartment Net for Heating System.

Traxter, Traxter MAX 2020 (except Traxter PRO & HD5 models)

715005904

Traxter, Traxter MAX 2022 & up (except XU models)

715008093

Traxter, Traxter MAX 2022 & up (XU models only)

715008095

Traxter, Traxter MAX 2021 (except models with ABS & HD5)

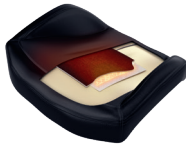
715007353

- Best integrated in-dash system on the market with 3 fan speeds and adjustable temperature.
- Adjustable/directional vents can be closed to concentrate heat at specific areas.
- A total of 8 vents specially positioned for windshield and occupant heating.
- Easy-to-service air filter.
- Includes the replacement lower dashboard compartment for the heating system.
- Dash Storage Compartment Net for Heating System is recommended.

Heated Seat

Traxter, Traxter MAX

715006112



- 25 W seat heater delivers chill-free riding comfort.
- High/low temperature settings allow you to control the desired degree of warmth.
- This kit includes one carbon fiber seat heater, foam sheet and in-dash switch.
- Installs directly in the original seat cushion.
- Heated Accessories Wiring Harness (710005757) is required for installation on front seat.
- Heated Accessories Wiring Harness (715006036) is required for installation on Traxter XT Cab, PRO and Limited models.
- Heated Accessories Wiring Harness (715006004) is required for installation on rear seats on MAX models.

Heated Seat Harness for MAX Model

(Not illustrated)

Traxter MAX

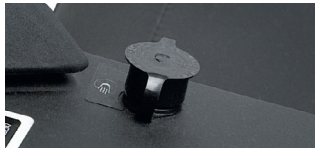
715006004

- Electric harness required to hook up and operate rear heated seats.

Heated Visor Outlet

Traxter, Traxter MAX

715001246



- Strategically positioned on vehicle to maintain your agility.
- Optional visor outlet that delivers fog-free riding.
- Quick and easy installation.
- Sold individually.
- Heated Visor not included.

Heated Accessories Wiring Harness

(Not illustrated)

Traxter, Traxter MAX (models with defrost, heat & ventilation system),
All Traxter PRO models

715006036

Traxter, Traxter MAX
(models without defrost, heat & ventilation system)

710005757

- Electric harness required to hook up and operate heated accessories.
- Power up to 4 accessories: 2 hand accessories (grab bar/steering wheel) and 2 seat covers.

WINCHES & HITCHES

Can-Am HD Winches

Can-Am HD 4500 Winch

Traxter, Traxter MAX

715006416



- Ergonomic clutch handle.
- Rugged all-steel gears and bushings for more torque and durability.
- Automatic 100% load-holding brake.
- Sealed solenoid for all-weather protection.
- Weather sealed corded remote and dash mounted switch.
- EC compliant.
- Pulling strength capability of 4,500 lb (2,041 kg).
- 43' of 1/8" (13.1 m of 6.3 mm) wire steel cable.
- Heavy-duty 4-way roller fairlead.
- Winch Electrical Harness (715007078) is required for installation on a Traxter 2021 and prior. Winch Electrical Harness (715008152) is required for installation on a Traxter Base and DPS 2022 and up.

Can-Am HD 4500-S Winch

Traxter, Traxter MAX

715006417



- Ergonomic clutch handle.
- Rugged all-steel gears and bushings for more torque and durability.
- Automatic 100% load-holding brake.
- Sealed solenoid for all-weather protection.
- Weather sealed corded remote and dash mounted switch.
- Pulling strength capability of 4,500 lb (2,041 kg).
- 50' of 1/4" (15.2 m of 6.35 mm) synthetic rope.
- Corrosion-proof aluminum hawse fairlead.
- Winch Electrical Harness (715007078) is required for installation on a Traxter 2021 and prior. Winch Electrical Harness (715008152) is required for installation on a Traxter Base and DPS 2022 and up.

WARN[†] VRX Winches

WARN VRX 45 Winch

Traxter, Traxter MAX
(except XT Cab 2018-2019, Lone Star Edition,
X mr, Limited, DPS Cab & Hunting Edition
2020 & up)

715006110



- Extreme IP68-rated waterproof sealing keeps the elements out.
- Durable all-metal construction.
- Black powder-coated finish and stainless steel fasteners for corrosion resistance.
- Robust new clutch design based on 70+ years of WARN 4 WD hub lock know-how.
- Load-holding brake for great control.
- Smooth and reliable all-metal three-stage planetary gear train.
- Dash-mounted rocker control.
- Limited lifetime warranty (mechanical), 3-year warranty (electrical).
- Pulling strength capability of 4,500 lb (2,041 kg).
- 50' of 1/4" (15 m of 6.3 mm) wire steel cable.
- Roller fairlead.
- Winch Electrical Harness (715007078) is required for installation on a Traxter 2021 and prior. Winch Electrical Harness (715008152) is required for installation on a Traxter 2022 and up.

WARN VRX 45-S Winch

Traxter, Traxter MAX
(except XT Cab 2018-2019, Lone Star Edition,
X mr, Limited, DPS Cab & Hunting Edition
2020 & up)

715006111



- Extreme IP68-rated waterproof sealing keeps the elements out.
- Durable all-metal construction.
- Black powder-coated finish and stainless steel fasteners for corrosion resistance.
- Robust new clutch design based on 70+ years of WARN 4 WD hub lock know-how.
- Load-holding brake for great control.
- Smooth and reliable all-metal three-stage planetary gear train.
- Dash-mounted rocker control.
- Limited lifetime warranty (mechanical), 3-year warranty (electrical).
- Pulling strength capability of 4,500 lb (2,041 kg).
- 50' of 1/4" (15 m of 6.3 mm) synthetic rope.
- Cast aluminum hawse fairlead.
- Winch Electrical Harness (715007078) is required for installation on a Traxter 2021 and prior. Winch Electrical Harness (715008152) is required for installation on a Traxter 2022 & up.

Cargo Bed Winch

Traxter, Traxter MAX

715006355



- Allows you to pull heavy loads into the cargo box easily.
- Perfect for hunting applications, i.e., loading game.
- Includes support base made of heavy-duty 2" (5 cm) steel tubing, winch and weather-sealed corded remote.
- 750 lb (340 kg) maximum pulling capacity.
- Electronic security module to prevent vehicle damage that could occur if loaded vehicle exceeds manufacturer's gross weight rating.
- Adapter Kit (715004709) required for installation with Gear Rail Adapter.
- Requires Powertilt bed for Traxter 6x6 and PRO.
- Not CE certified.
- Not available in Europe.

Synthetic Winch Cable*

Can-Am HD Winch
WARN Winch

715006430
715007783



- 50' of ¼" (15.2 m of 6.35 mm) synthetic cable for WARN winch.
- WARN Hawse Fairlead is required when upgrading to a synthetic cable to avoid damage and premature wear of the cable.

**Ask your dealer or visit canamoffroad.com for price details.*

Replacement Wire Rope*

Can-Am HD Winch
WARN Winch

705014978
715006699



- 43' of 15/64" (13.1 m of 6.3 mm) wire rope.
- 4,500 lb (2,041 kg) pulling strength.

**Ask your dealer or visit canamoffroad.com for price details.*

Synthetic Cable Extension

715001120



- Lightweight ¼" (6.35 mm) diameter, easy to handle and won't rattle in cargo box.
- Easily attaches to winch cable to provide additional 50' (15.2 m) of distance.
- 4,500 lb (2,041 kg) single line capacity.

WARN Hawse Fairlead*

With WARN winch

715007785



- Double-powder-coated construction.
- Required to use the Synthetic Winch Cable (715007783) on WARN winches.
- To be used with synthetic winch cables only.

Can-Am HD Hawse Fairlead

With Can-Am HD winch

715006426



- A must when upgrading your winch with a synthetic cable, this corrosion-proof aluminum hawse fairlead will prevent the cable from snapping in a corner of a roller fairlead and from wearing prematurely due to the rough surface of the worn roller guide.
- Must be used with synthetic cables only.

Roller Fairlead

With Can-Am HD winch

710007082



- Suggested when changing the wire rope.
- Heavy-duty replacement fairlead for winches.

Wired Remote Control

With Can-Am HD winch

715006504



- This kit allows winch owners to add the hand-held remote to vehicles with a stock winch.
- Works in conjunction with the mini-rocker switch.
- Remote control and connection socket are included with Can-Am HD winch.
- EC compliant.

Wireless Remote Control

With WARN winch

715002542



- The system is quick and easy to install, thanks to a wiring harness with an integrated antenna and all necessary mounting hardware.
- Allows you to operate your winch from anywhere within a 50' (15.2 m) radius, increasing your recovery options.
- All components are weatherproof.

Lower Front Receiver Hitch

Traxter, Traxter MAX

715002519



- Heavy-duty 1,500 lb (680 kg) towing capacity 2" (5 cm) receiver hitch.
- Expand and enhance functionality by pairing it with Higher Front Receiver Hitch and Removable Winch Mounting Kit (need to relocate winch from its standard mounting position).

Higher Front Receiver Hitch

Traxter, Traxter MAX (except Limited models)

715003109



- Heavy-duty 1,500 lb (680 kg) towing capacity 2" (5 cm) receiver hitch.
- No need to relocate winch from its standard mounting position.

Winch Electrical Harness

(Not illustrated)

Traxter, Traxter MAX (2019 & prior)

715003093

Traxter, Traxter MAX (2020 & 2021)

715007078

Traxter, Traxter MAX 2022

715008152

- Required to install a winch on a Traxter without a factory-installed winch.

Front and Rear Hitch Drawbar

Traxter, Traxter MAX

715008350



- Standard on 2" (5 cm) receiver hitch.
- It offers 1,650 lb (750 kg) of towing capacity.
- Hitch ball not included.
- Forged steel.

Installation of some accessories shown may impact vehicle compliance with some regulations. Consult your local dealer for information.

Rubber Receiver Plug

705204503



- Rubber cap for 2" (5 cm) Receiver Hitch.

PERFORMANCE

Performance Half Shaft	Traxter and Traxter MAX (2019 & prior -except X mr, XT-P and XT CAB 2018-2019)	705402353
	Traxter, Traxter MAX XT Cab 2018-2019, Lone Star Edition 2019 & prior	705402575



- High-performance design ideal for off-road use, with superior wheel power and acceleration for racing, dunes and desert riding.
- Includes CVs, shaft and boots with the best suited geometry for your Can-Am vehicle.

Brake Holding Mechanism	Traxter, Traxter MAX	715004733
--------------------------------	----------------------	------------------



- Maintains constant pressure on the brake pedal to keep the vehicle from moving on sloped terrain, without having to put the transmission in P (park).
- Standard equipment on T-category models

Heavy-Duty Spring Kit	Traxter (Base, DPS (HD5, HD7, HD8 & HD9), XT (HD7, HD8 & HD9) & PRO (HD8)). (Except Traxter MAX, 6x6 and Traxter PRO).	715005084
------------------------------	--	------------------



- This set of heavy-duty springs will stiffen your suspension.
- Perfect for reducing vehicle overall sag when shocks are under heavy demand: heavy loading and hauling or for snow clearing.
- Complete kit of 4 springs.
- Not compatible with Traxter HD5, HD10, XT CAB, Mossy Oak Edition & X mr models and Traxter MAX.

850 W Magneto Kit	Traxter, Traxter MAX (2020 & up except HD5 & HD7)	715007122
--------------------------	---	------------------








- Increases the magneto output to 850 W.
- Includes rotor, stator and regulator.

Emergency Kit	Traxter, Traxter MAX	715006102
----------------------	----------------------	------------------



- Complete emergency kit provides all essential equipment and supplies to get out of most unfavorable situations powersport enthusiasts can find themselves in.
- Includes: jumper cables, air compressor, tire repair kit, first aid kit, ratchet tie-down, duct tape, tow strap 3,300 lb (1,500 kg), zip-ties, cloth rags.

Air Intakes & Exhaust

Snorkel Kit	Traxter, Traxter MAX 2018 & up (except Traxter HD5, HD7, Traxter Limited and Traxter PRO)	715003727
	<ul style="list-style-type: none"> • Raises point of engine and CVT air intakes so vehicle can be semi-submersed in water/mud without taking in water to the engine. • Not compatible with Headache Racks, Gear Rail equipment, DragonFire Cargo Bed Roll Bar and Windshield Wiper & Washer Kit. • Snorkel Extension Kit is available for roof level air intake and CVT exhaust. • Standard on Traxter X mr models. 	
<p><i>Installation of some accessories shown may impact vehicle compliance with some regulations. Consult your local dealer for information.</i></p>		
Sealed Air Box <i>(Not illustrated)</i>	Traxter, Traxter MAX 2017 & prior	707801033
<ul style="list-style-type: none"> • Required when installing the Snorkel Kit (715003727) on Traxter and Traxter MAX 2017 and prior models. • Standard on Traxter 2018 and up models. 		
Snorkel Pre-Filter	Traxter, Traxter MAX (except Traxter PRO)	715005597
	<ul style="list-style-type: none"> • Pre-filter specifically for snorkels. • Adds extra protection to your engine in harsh riding conditions. • Helps keep air filter cleaner. • Filter blocks particles larger than 0.005" (0.13 mm). • Necessary to maintain vehicle warranty when tracks are installed for winter use. • For Traxter and Traxter HD10 models 2020 & up: Replace CVT intake of snorkel kit with CVT relocation kit 715008651 or 703501211. 	
Air Intake Pre-Filter	Traxter (except X mr models), Traxter MAX	715003483
	<ul style="list-style-type: none"> • Adds extra protection to your engine in harsh riding conditions. • Helps keep air filter cleaner. • Filter blocks particles larger than 0.007" (0.19 mm). • Easy, tool-less installation. • Necessary to maintain vehicle warranty when tracks are installed. • Required to install the Apache and Backcountry Track Systems. • Not compatible with Snorkel Kit. 	
Foam Air Filter by Twin AIR[†]	Traxter, Traxter MAX	715003630
	<ul style="list-style-type: none"> • The best choice for the harshest conditions. • Multiple staged oiled filtering foam for superior dust retaining capacity with high air flow. • Washable and reusable. 	
CVT Air Intake Relocation Kit	Traxter, Traxter MAX (without Snorkel Kit) Traxter, Traxter MAX (X mr models or models with Snorkel Kit)	703501210 703501211**
	<ul style="list-style-type: none"> • The CVT air intake relocation kit is MANDATORY for track-equipped 2020 to 2022 and some 2023[*] Traxter and Traxter HD10 models used in snow conditions and highly recommended for other models. • This kit is sold separately. 	
<p><i>[*]Comes from the factory on some MY23; inspect the vehicle to confirm. Mandatory on all MY20 and up Traxter and Traxter HD10 models equipped with a snorkel. ^{**}When installed on X mr models or models with Snorkel Kit, it temporarily relocates CVT air intake to the standard factory location.</i></p>		

APACHE TRACK SYSTEMS

Apache XC LT

Limited Warranty*

NEW Apache XC LT Track System

Traxter, Traxter MAX (except 6x6)

715007719



- Long Track version.
- Brand-new track design to optimize driving off and in deep snow conditions.
- Reduction in steering effort thanks to the tandem 4 wheels.
- Vibrations are reduced due to the alignment of the wheels with the rolling band of the track and the shaft damper mounted tandem.
- Better steering precision because of this wheel and track alignment due to good ground contact.
- 1.25" (3.175 cm) lugs in the front and in the back for better traction and lateral stability.
- Track width: front 12.5" and rear 15".
- Adds 3" (7.62 cm) of ground clearance versus 27" tires.
- Additional shaft dampers, tandem dampers, track design and wheel layout significantly reduce NVH (noise vibration harshness).
- Central guide for optimized track alignment and reduced occurrences of detracking.
- Optimized track layout with increased angle of attack for better obstacle crossing and snow performances.
- Stamped and welded steel frame for improved strength and durability.
- Easy maintenance with replaceable hub and wheel bearings.
- Main hub is oil bath with 3 bearings inside for consistent lubrication.
- DPS module and engine and CVT pre-filter required.
- Mounting kit sold separately.

Installation of some accessories shown may impact vehicle compliance with some regulations. Consult your local dealer for information.

NEW Apache XC LT Mounting Kit

(Not illustrated)

Traxter, Traxter MAX (except 6x6).

715006891
715008612

- Required for installation of the Apache XC LT Track System.
- DPS module and Engine Pre-Filter not included.
- The CVT air intake relocation kit is MANDATORY for track-equipped 2020 and up Traxter models HD10 used in snow conditions and highly recommended for other models.*
- This kit is sold separately.
- See table for fit, compatibility and requirements.

**Comes from the factory on some 2023 and up models, inspect the vehicle to confirm. Mandatory on all 2020 and up Traxter models HD10 equipped with a snorkel.*

Installation of some accessories shown may impact vehicle compliance with some regulations. Consult your local dealer for information.

Apache Backcountry

Limited Warranty*

Apache Backcountry LT Track Kit

Traxter, Traxter MAX (except 6x6)

715005891



- Tracks designed to deliver the best snow performance on the market with unmatched flotation level and traction on snow surface.
- Large contact patch, 37% bigger than the Apache 360 LT.
- Impressive added ground clearance of 7" (18 cm) helps keep the vehicle over the snow.
- Lightweight snowmobile-inspired rail design.
- Aggressive track design with 2" (5 cm) lug height for maximum traction on snow.
- Apache Backcountry LT Mounting Kit, Track DPS Module and Engine Pre-Filter are required and sold separately.
- The CVT air intake relocation kit is MANDATORY for track-equipped 2020 to 2022 and some 2023' Traxter and Traxter HD10 models and highly recommended for other models. This kit is sold separately.
- For winter use only.
- Track installation will affect vehicle width and length.
- Fine-tune your track system using extra Idler Wheels, Sliders with Vespel Inserts and Rail Ice Scratcher.

**Comes from the factory on some MY23, inspect the vehicle to confirm. Mandatory on all MY20 and up Traxter and Traxter HD10 models equipped with a snorkel.*

Installation of some accessories shown may impact vehicle compliance with some regulations. Consult your local dealer for information.

Apache Backcountry LT Mount Kit

(Not illustrated)

See table for fit, compatibility and requirements.

715005888
715005493
715006196

- Required for installation of the Apache Backcountry Track LT System.
- DPS Module and Engine Pre-Filter are required and sold separately.
- The CVT air intake relocation kit is MANDATORY for track-equipped 2020 to 2022 and some 2023' Traxter and Traxter HD10 models and highly recommended for other models. This kit is sold separately.

**Comes from the factory on some MY23, inspect the vehicle to confirm. Mandatory on all MY20 and up Traxter and Traxter HD10 models equipped with a snorkel.*

Installation of some accessories shown may impact vehicle compliance with some regulations. Consult your local dealer for information.

*The limited warranty is subject to the exclusions, limitations of liabilities and all other terms and conditions of BRP's standard limited warranty.

Apache 360

Limited Warranty*

Apache 360 LT Track System

Traxter, Traxter MAX (except 6x6)

715005103



- Multifunctional tracks designed to support heavy loads and to fit on most Can-Am off-road vehicles.
- Extra contact patch adjustment for better performance over rough terrain.
- Contact patch is 7 to 9% bigger than the Apache 360's.
- Average ground clearance of 16" (41 cm). 1" (2.5 cm) lugs in the front and 1.25" (3.2 cm) in the back.
- EC compliant.
- Apache 360 LT Mounting Kit, Track DPS Module and Engine Pre-Filter Kit are required and sold separately.

- The CVT air intake relocation kit is MANDATORY for track-equipped 2020 to 2022 and some 2023¹ Traxter and Traxter HD10 models used in snow conditions and highly recommended for other models. This kit is sold separately.

*¹Comes from the factory on some MY23, inspect the vehicle to confirm.
Mandatory on all MY20 and up Traxter and Traxter HD10 models equipped with a snorkel.*

Installation of some accessories shown may impact vehicle compliance with some regulations. Consult your local dealer for information.

Apache 360 LT Mounting Kit

(Not illustrated)

See table for fit, compatibility and requirements.

715004832

715004831

715005492

- Required for installation of the Apache 360 LT Track System.
- DPS module and Engine Pre-Filter not included.
- The CVT air intake relocation kit is MANDATORY for track-equipped 2020 to 2022 and some 2023¹ Traxter and Traxter HD10 models used in snow conditions and highly recommended for other models.

- This kit is sold separately

*¹Comes from the factory on some MY23, inspect the vehicle to confirm.
Mandatory on all MY20 and up Traxter and Traxter HD10 models equipped with a snorkel.*

Installation of some accessories shown may impact vehicle compliance with some regulations. Consult your local dealer for information.

Apache Accessories

Track DPS Module

(Not illustrated)

715006266

715007338

- An innovative DPS module that ensures speedometer accuracy and optimized steering assist, which make for perfect track control and riding ease.
- Required to install the Apache and Backcountry Track Systems.

Installation of some accessories shown may impact vehicle compliance with some regulations. Consult your local dealer for information.

Rail Ice Scratchers

Apache Backcountry and Backcountry LT Track Systems

860201728



- Provide additional lubrication in hard and icy conditions and extend slider life.
- Rail mounted, small, light.
- Design expands on coil concept to allow reversing without damage.
- Easily stored when not in use.

Extra Wheel Kit

Apache Backcountry LT Wheel Kit

715006293



- Additional wheel kit for Backcountry LT rear tracks.
- Reduces drag and rolling resistance in hard snow conditions or when transporting heavier loads.
- Extends slider life in hard snow conditions.
- Includes two wheels, cross shaft and mounting hardware per kit to service one track corner.
- Up to two kits per rear track can be installed.

*The limited warranty is subject to the exclusions, limitations of liabilities and all other terms and conditions of BRP's standard limited warranty.

APACHE TRACK SYSTEMS FITTING GUIDE

Apache XC LT

Model Year / Model	Vehicle Width	Track	Track Mount	Track DPS Module	CVT Pre-Filter	Engine Pre-Filter
2019 & Prior Traxter: Base, DPS, Hunting Edition, M.O. Hunting Edition, XT, XT Cab, XT-P Traxter MAX: Base, DPS, XT, XT Cab	62"	715007719	715006891	715007338	703501210 (w/o Snorkel Kit) 703501211 (w/ Snorkel Kit)	715003483 (w/o Snorkel Kit) 715005597 (w/ Snorkel Kit)
2020 & Up Traxter: Base, DPS, XT Traxter MAX: Base, DPS (HD8 & HD9), XT (HD8 & HD9)	62"		715008612			
2020 to 2022 Traxter, Traxter MAX: DPS (HD10), XT (HD10), XT-P, Traxter PRO: DPS (HD10), XT (HD10)	64"		715008612			
2023 & Up Traxter, Traxter MAX: DPS (HD10), XU (HD9, HD10 T-cat), XT (HD10), Limited, X mr Traxter PRO: DPS (HD10), XU, XT (HD10), Limited	64" and 65"		715008612			
2024 & Up Traxter: Base (HD7), DPS (HD7), XT (HD7)	62"		715006891	715006266		

Apache Backcountry LT

Model Year / Model	Vehicle Width	Track	Track Mount	Track DPS Module	CVT Pre-Filter	Engine Pre-Filter
2019 & Prior Traxter Base, DPS, XT, XT Cab 2017 & Hunting Edition, XT-P	62"	715005891	715005888	715007338	703501210 (w/o Snorkel Kit) 703501211 (w/ Snorkel Kit)	715003483 (w/o Snorkel Kit) 715005597 (w/ Snorkel Kit)
2019 & Prior Traxter XT Cab 2018-2019, Lone Star Edition & X mr	65"		715006196			
2020 & Up Traxter Base, DPS (HD5, HD7, HD8, HD9), DPS (HD10 T-cat 2020), XT (HD8, HD9), XU (HD7 T-cat), PRO T-cat 2020 (HD8, HD10)	62"		715005888			
2020 & Up Traxter DPS (HD10 except T-cat 2020), XT (HD10), XU (HD9 T-cat), XU (HD10 T-cat) 2021 & up, XT-P, PRO DPS, PRO XU	64"		715005493			
2020 to 2022 Traxter XT Cab, XT Cab Limited, DPS Cab, Hunting Edition, Lone Star Edition, X mr, PRO Limited, PRO Lone Star	65"		715006196			
2023 & Up Traxter DPS Cab, XT Cab Limited, Hunting Edition, Lone Star Edition, X mr, PRO Limited, PRO Lone Star	65"		715005493			
2024 & Up Traxter HD7	62"		715005888	715006266		

Apache 360 LT

Model Year / Model	Vehicle Width	Track	Track Mount	Track DPS Module	CVT Pre-Filter	Engine Pre-Filter
2019 & Prior Traxter Base, DPS, XT, XT Cab 2017 & Hunting Edition, XT-P	62"	715005103	715004831	715007338	703501210 (w/o Snorkel Kit) 703501211 (w/ Snorkel Kit)	715003483 (w/o Snorkel Kit) 715005597 (w/ Snorkel Kit)
2019 & Prior Traxter XT Cab 2018-2019, Lone Star Edition & X mr	64"		715004832			
2020 & Up Traxter Base, DPS (HD5, HD7, HD8, HD9), DPS (HD10 T-cat 2020), XT (HD8, HD9), XU (HD7 T-cat), PRO T-cat 2020 (HD8, HD10)	62"		715004831			
2020 & Up Traxter DPS (HD10 except T-cat 2020), XT (HD10), XU (HD9 T-cat), XU (HD10 T-cat) 2021 & up, XT-P, PRO DPS, PRO XU	64"		715005492			
2020 to 2022 Traxter XT Cab, XT Cab Limited, DPS Cab, Hunting Edition, Lone Star Edition, X mr, PRO Limited, PRO Lone Star	65"		715004832			
2023 & Up Traxter DPS Cab, XT Cab Limited, Hunting Edition, Lone Star Edition, X mr, PRO Limited, PRO Lone Star	65"		715005492			
2024 & Up Traxter HD7	62"		715004831	715006266		

PROMOUNT PLOWS

Can-Am ProMount Flex2 Plow Kit

Can-Am ProMount Flex2 72" (183 cm) Blade Plow Kit	Traxter, Traxter MAX	715008170
--	----------------------	------------------



- These kits include:
 - Can-Am ProMount Flex2 Blade
 - Push Frame with Quick-Attach System
 - Mounting Plate

Can-Am ProMount Flex2 Blades

Can-Am ProMount Flex2 66" (168 cm) Blade	Fits ProMount Push Frame	715006265
---	--------------------------	------------------



- Plow blade made of UHMWPE, flexible and impact absorbing material prevents damaging your plow when accidental impact occurs.
- Replaceable wear blade.
- Large pin designed for easy blade rotation to eliminate snow buildup at pivot point.
- Blade design provides best snow roll-off at any angle.
- Clears 60" (152 cm) when plow is fully angled.
- Blade height of 17" (43 cm).
- Compatible with Can-Am ProMount Blade accessories to further enhance plow versatility.

Can-Am ProMount Flex2 72" (183 cm) Blade	Fits ProMount Push Frame	715004485
---	--------------------------	------------------



- Plow blade made of UHMWPE, flexible and impact absorbing material prevents damaging your plow when accidental impact occurs.
- Replaceable wear blade.
- Large pin designed for easy blade rotation to eliminate snow buildup at pivot point.
- Blade design provides best snow roll-off at any angle.
- Clears 66" (168 cm) when plow is fully angled.
- Blade height of 17" (43 cm).
- Compatible with Can-Am ProMount Blade accessories to further enhance plow versatility.

Can-Am ProMount Steel Plow Kit

Can-Am ProMount Steel 72" (183 cm) Blade Plow Kit	Traxter, Traxter MAX	<ul style="list-style-type: none"> ■ 715008172 · Black ■ 715008171 · Yellow
--	----------------------	---



- These kits include:
 - Can-Am ProMount Steel Blade
 - Push Frame with Quick-Attach System
 - Mounting Plate

Can-Am ProMount Steel Blades

Can-Am ProMount Steel 66" (168 cm) Blade	Fits ProMount Push Frame	■ 715006337 · Black
---	--------------------------	----------------------------



- Plow blade made from 12-gauge steel.
- Replaceable wear blade.
- Large pin designed for easy blade rotation to eliminate snow buildup at pivot point.
- Blade design provides best snow roll-off at any angle.
- Clears 60" (152 cm) when plow is fully angled.
- Blade height of 17" (43 cm).
- Compatible with Can-Am ProMount Blade accessories to further enhance plow versatility.
- Not compatible with S3 High Clearance Front A-Arm.

Can-Am ProMount Steel 72" (183 cm) Blade	Fits ProMount Push Frame	<ul style="list-style-type: none"> ■ 715004474 · Black ■ 715006021 · Yellow
---	--------------------------	---



- Plow blade made from 12-gauge steel.
- Replaceable wear blade.
- Large pin designed for easy blade rotation to eliminate snow buildup at pivot point.
- Blade design provides best snow roll-off at any angle.
- Clears 66" (168 cm) when plow is fully angled.
- Blade height of 17" (43 cm).
- Compatible with Can-Am ProMount Blade accessories to further enhance plow versatility.
- Not compatible with S3 High Clearance Front A-Arm.

ProMount Plow Kits – Reference Charts

	66" Black Steel	66" Yellow Steel	66" Flex2	72" Black Steel	72" Yellow Steel	72" Flex2
Plow Kit	-	-	-	715008172	715008171	715008170
Blade	715006337	-	715006265	715004474	715006021	715004485
Push Frame	715008116	715008116	715008116	715008116	715008116	715008116
Mounting Plate	715007745	715007745	715007745	715007745	715007745	715007745

Can-Am ProMount Angle Plows

Can-Am ProMount 66" (168 cm) Steel Oneway State Blade

Fits ProMount Push Frame

715007263



- Make the job easier with the right tools, clear long alleys and make the task easier by sending the snow further out of the way.
- Wing end of plow measures 26" (67 cm) high and tapers down to 16" (41 cm).

- One-way "winged" state plow designed to throw snow higher.
- Rubber Flap (715007299) designed to keep snow away from the driver is offered as accessory (sold separately).
- Can-Am branded.

Can-Am ProMount 72" (183 cm) Steel Oneway State Blade

Fits ProMount Push Frame

715007264



- Make the job easier with the right tools, clear long alleys and make the task easier by sending the snow further out of the way.
- Wing end of plow measures 26" (67 cm) high and tapers down to 16" (41 cm).

- One-way "winged" state plow designed to throw snow higher.
- Rubber flap (715007299) designed to keep snow away from the driver is offered as accessory (sold separately).
- Can-Am branded.

Can-Am ProMount Plow Accessories

Can-Am ProMount Edge Markers

Traxter, Traxter MAX

715004206



- Help locate the edges of your plow.
- Height: 24" (60 cm).
- Sold in pairs.
- Compatible with Can-Am ProMount Steel and Flex2 blades with or without Blade Extensions (except for the Can-Am ProMount Steel 54" (137 cm) Blades).

Can-Am ProMount 66" (168 cm) Plastic Wear Blade

Traxter, Traxter MAX

715004482

Can-Am ProMount 72" (183 cm) Plastic Wear Blade

Traxter, Traxter MAX

715004483



- To help prevent scratches on smooth driveways and markable surfaces.

Can-Am ProMount Drift Cutters

Traxter, Traxter MAX

715006258



- Help keep snow in the plow.
- Dimensions: 17" x 13" (43.2 cm x 33 cm).
- Sold in pairs.
- Compatible with Can-Am ProMount Steel and Flex2 blades with or without Blade Extensions (except for the Can-Am ProMount Steel 54" (137 cm) Blades).

Can-Am ProMount Blade Extensions

Traxter, Traxter MAX

■ **715004205** · Black
■ **715005319** · Yellow



- Add 3" (8 cm) each side.
- Compatible with Can-Am ProMount Blades (except for Can-Am ProMount Steel 54" [137 cm] Blade).
- Longer Wear Blade can be installed to further extend the extra length already provided by the extensions.
- Compatible with Can-Am ProMount Steel and Flex2 Blades (except for the Can-Am ProMount Steel 54" [137 cm] Blades).

Back Drag Blade

(Not illustrated)

ProMount Plows (60" and more)

715007794

- ¼ thick steel swivel scraper.
- Lifts up when the vehicle is moving forward so as not to affect the scraping.
- Increased capacity to pull snow.
- More aggressive scraping in reverse mode.
- Lifts the scraper off the ground so that it scrapes evenly.
- Adjustable in length for compatibility with 60", 66" and 72" blades.
- Compatible with ProMount blades (Flex and Steel).

Can-Am ProMount Push Frame with Quick-Attach System

Traxter, Traxter MAX

715008116

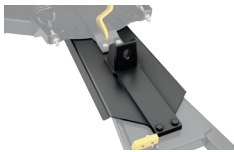


- Heavy-duty steel tubes designed to withstand the roughest use.
- Mid-mount carriage provides ultimate push strength and traction.
- Designed for maximum plow lift height.
- Features a self aligning quick-attach system, an easy foot release pedal and an ergonomic handle for plow angle adjustment.
- Plow Limit Switch recommended to extend winch cable lifespan.
- Can-Am ProMount Mounting Plate required for installation.
- Blade swivels left or right, 5 positions.
- Large pin designed for easy blade rotation to eliminate dirt and snow buildup at pivot point.

Can-Am ProMount Push Frame Extension

Traxter, Traxter MAX

715006257



- 12" (30 cm) push frame extension required when plow is installed with Apache Track Systems.

Can-Am ProMount Mounting Plate

Traxter, Traxter MAX (2021 & prior)

715007743



- Required to install the Can-Am ProMount Push Frame with Quick-Attach System.
- Mounting plate precision-designed to stay on year round without compromising ground clearance.
- Comes with the Plow Roller Fairlead.
- Not compatible with S3 Front High Clearance A-Arm (715003784).

Can-Am ProMount Mounting Plate

Traxter, Traxter MAX (2022 & up)

715007745

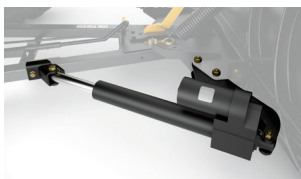


- Required to install the Can-Am ProMount Push Frame with Quick-Attach System.
- Mounting plate precision-designed to stay on year round without compromising ground clearance.
- Comes with the Plow Roller Fairlead.
- Not compatible with S3 Front High Clearance A-Arm (715003784).

Can-Am ProMount Plow Angling System

Traxter, Traxter MAX

715009241



- Converts your plow system into an easy-to-control unit from the driver's seat.
- Allows you to have full up/down and left/right plow control at your fingertips with the supplied joystick.
- Using one hand to control all plow motions allows you to easily concentrate and manage your plowing tasks.
- Compatible with the SxS ProMount Push Frame and Blade.
- Not compatible with Apache Backcountry LT Track System.
- Push Frame Extension (715006257) is required for installation with the Front Rancher Bumper.
- Winch and plow sold separately.

ProMount Plow Limit Switch

(Not illustrated)

Traxter, Traxter MAX

715006259

- For controlling the cable tension when over-raising your plow system.
- Prevents winch, plow push frame and vehicle damage.
- Sensor relocated for optimal lift height.

Plow Roller Fairlead

Traxter, Traxter MAX

715001223



- Cylindrical roller fairlead.
- Larger diameter lower roller reduces wear on wire rope for plow application.
- Can be used with all ProMount plows.

Super-Duty Plow System

Super-Duty 72" (183 cm) Blade Plow Kits

Traxter, Traxter MAX

715003416



- A comprehensive plow system with manual lift and angling.
 - Ultra-durable 72" (183 cm) blade made of 12-gauge steel with integrated reinforcement and heavy-duty push tubes to tackle the most demanding jobs.
 - Requires a winch for raising and lowering.
 - Convenient disconnect system for quick and easy installation or removal.
 - Front mount provides minimum 11" (28 cm) lift distance.
- This kit includes:
- 72" (183 cm) Super-Duty Plow.
 - Super-Duty Plow Push Frame.
 - Super-Duty Plow Mounting Kit.

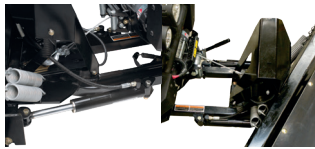
Super-Duty Plow Hydraulic Angling Kit

Traxter, Traxter MAX (2019 & prior)

715002840

Traxter, Traxter MAX (2020 & up)

715006038



- Allows you to have full up/down and left/right plow control at your fingertips.
- Pre-assembled, it comes with everything you need to turn your Super-Duty Plow into a quick, easy-to-control unit from the driver's seat.
- Using one hand to control all plow motions with the supplied joystick will allow you to easily concentrate and manage your plowing tasks.
- With this commercial grade kit, you will send snow exactly where you want reliably all winter long.
- Winch and plow sold separately.

Super-Duty Plow Push Frame Extension

(Not illustrated)

Super-Duty Plow

715001221

- Extension to use the Super-Duty Plow with the Apache 360 LT Track System.
- Comes with Plow Magnetic Switch and Plow Pulley.
- Requires Front Bumper or Front Accessory Bar for installation.

Plow Blade Extensions

Super-Duty Plow

715001217



- Side extensions for widening your plow blade by 6" (15 cm) on each side.
- Include rubber flaps for extension parts.
- Sold in pairs.

Plow Edge Markers

(Not illustrated)

Super-Duty Plow

715001216

- For a more accurate view of the width of your plow.
- Allows you to work closely around objects.

Plow Drift Cutter

(Not illustrated)

Super-Duty Plow

715001218

- Keeps snow securely in the plow.
- Allows you to cut a cleaner pass.
- Sold individually.

Plow Rubber Flap

(Not illustrated)

Super-Duty Plow

715001219

\$114.99

- Keeps snow away from the driver and helps snow to roll in front of the plow.

Plow Pulley

(Not illustrated)

Super-Duty Plow

715002042

- For use with the Super-Duty Plow.
- Helps winching efficiency.
- Requires Front XT Bumper.

Plow Magnetic Switch

(Not illustrated)

Super-Duty Plow

715001995

- Magnetic switch that stops the winch to prevent cable, winch and frame damage.
- For use with Super-Duty Plow.

COVERS & ADD-ONS

Trailer Cover

Traxter, Traxter 6x6, Traxter PRO
Traxter MAX

715004453

715004454



- Heavy-duty canvas made of UV-resistant solution-dyed polyester.
- Inner soft liner protects windshield and colored panels from abrasion.
- All high-abrasion areas are reinforced with a double canvas layer.
- Weather-resistant trawling cover protects your vehicle during storage and transportation.
- Opening for fuel cap.
- Quick and easy installation.
- Designed to perfectly fit your vehicle with or without Can-Am accessories.
- Does not fit with Adventure Roof Rack (715003870).

Bolt-On⁺ Retractable Ratcheting Tie-Downs

295101072



- Perfect for transporting your powersport vehicle or securing loads.
- Mounts easily: Bolts on any flat surface (e.g., truck bed or frame).
- 1" x 6' (2.5 cm x 1.8 m) tie-down strap with heavy-duty stitching that delivers a 500 lb (226 kg) working load strength and 1,500 lb (680 kg) break strength.
- Convenient retractable push button automatically slackens, spools and stores away strap, while the ratchet mechanism tightens the strap snugly to secure your vehicle or load into place.
- Rubber ratcheting handle provides firm grip, and the hook is vinyl coated to protect whatever surface it hooks into.
- Sold in pairs.

Ratchet Tie-Downs

715008309 · Black/Gray



- 400 lb (181 kg) safe working load.
- 1" x 10' (2.5 cm x 3 m) strap with Sea-Doo, Ski-Doo and Can-Am logos.
- Deluxe ratchet with rubber handle.
- Coated S hooks.
- Pack of 2.

Heavy-Duty Ratchet Tie-Down

715008308



- 1,000 lb (454 kg) safe working load.
- 1.5" x 6' (38 mm x 1.8 m) strap with BRP brands.
- Deluxe ratchet with rubber handle.
- Black-coated clip hooks.
- 12" (300 mm) webbing included.
- Pack of two.



PARTS AND MAINTENANCE

Keep an Eye on These Parts	55
XPS Tires	56
XPS Oil & Oil Change Kits	57
Maintenance Products	58

A Can-Am utility vehicle is parked in a barn. A worker in a blue uniform and cap is shoveling dirt, with a cloud of dust or dirt splashing in the air. The scene is lit with dramatic, low-angle light from a window, creating long shadows and a high-contrast atmosphere. The vehicle's side panel features the 'Can-Am' logo and 'ROTAX' branding.

BLENDING PERFORMANCE AND SAFETY

Trust genuine Can-Am parts to keep your vehicle performing at its best.

ONE-YEAR WARRANTY*

Precisely engineered. Rigorously tested. Factory approved.

*Covers parts and labor when fitted at an authorized dealer.

CAN-AM TRAXTER



To make sure your Traxter performs as you expect,
keep an eye on these components:**

OIL FILTER 420256188

ENGINE OIL*

4T 10W-50 Synthetic Oil

1 quart / 946 ml 9779234
1 US gallon / 3.785 L 9779235

4T 0W-40 Synthetic Oil

1 quart / 946 ml 9779139
1 US gallon / 3.785 L 9779140

5W-40 Synthetic Oil

1 quart / 946 ml 9779492
1 US gallon / 3.785 L 9779493

OIL CHANGE KIT*

5W-40 Synthetic Oil

500 cc or more V-twin engine 9779488

5W-40 Synthetic Oil

ACE 650 cc Single Cylinder 9779480

0W-40 Synthetic Oil

500 cc or more V-twin engine 9779259

0W-40 Synthetic Oil

ACE 650 cc Single Cylinder 9779481

10W-50 Synthetic Oil

500 cc or more V-twin engine 9779252

5W-40 Synthetic Oil

450 cc or less 9779487

0W-40 Synthetic Oil

450 cc or less 9779257

EMISSION CONTROL

Fuel tank vent breather filter

(Non-EVAP models) 709001120

Canister vent pre-filter

(CARB and EVAP models) 513034047

AIR FILTER

715900394

CVT AIR FILTER

HD9, HD10

706600419

DRIVE BELT

HD10 Premium (Stock)

422280652

HD9 Premium (Stock)

422280656

HD7 Premium (Stock)

422280225

Performance (Upgrade):

see Reference Chart for upgrade

BRAKE PAD KITS

Front brake pads

(4 pads + hardware)
Traxter (All models) 703501198

Rear brake pads

(4 pads + hardware)
Traxter HD7-HD9-HD10 703501200
Traxter MAX-PRO-6X6 703501199

CV BOOT KITS

Front Wheel Side

705401345

Front Differential Side

705401355

Rear

705501864

WHEEL BEARINGS

293350150

FRONT A-ARM BUSHING KIT

703500875

BALL JOINTS

Upper

706202044

Lower

706202045

SPARK PLUG

HD10

715900244

HD9

715900642

HD7

715900785

BATTERY

18 Amps. Wet (YTX20L-BS)

296000444

* For Europe, please check correspondent PNs on page 57.

**Refer to periodic maintenance chart for proper intervals.

XPS TIRES

SHOP BY USAGE



GRAVEL &
HARD PACK



ROCK



MUD

XPS Trail Force



- All-terrain radial tire.
- 8-ply rated construction.
- Versatile and suitable for many types of terrain.
- Aggressive tread pattern for better traction on dirt, mud and rocky terrains.
- Tread depth: 20 mm (0.78").

705403026 · 26X8R14
705503322 · 26X10R14
705402754 · 27X9R14
705503103 · 27X11R14

XPS Trail King



- All-terrain radial tire.
- 8-ply rated construction.
- Aggressive tread pattern for tougher terrains.
- An almost continuous center tread offers a smoother trail ride.
- Tread depth: 26 mm (1.02").

705402713 · 26X8R12*
705503073 · 26X10R12*
705403081 · 27X9R14

*6 ply rating

705503355 · 27X11R14
705402825 · 28X9R14
705503181 · 28X11R14

XPS Trail King 2



- All-terrain radial tire.
- 6-ply rated construction.
- Tire excels in various terrains from loose to hard packed.
- Non directional tread pattern with optimized construction providing precision handling ensuring maximum grip and low rolling resistance
- Tread depth: 20 mm (0.78").

705403398 · 26X8R14
705503518 · 26X10R14
705403397 · 27X8R14
705503517 · 27X10R14

XPS Trac Force



- All-terrain light truck style radial tire.
- 8-ply rated construction.
- Central tread for good grip and comfort on compact terrain.
- Tread depth: 18 mm (0.71").

705403080 · 30X9R14
705403369 · 30X9R15
705503354 · 30X10R14
705403586 · 30X10R14 UT*

705403370 · 30X10R15
705403416 · 32X10R16 UT*
705403587 · 32X10R15 UT*
*6 ply rating

XPS Hammer Force



- Light truck-inspired tire.
- 8-ply rated construction.
- Rock-crawling tread pattern with unique contact patch.
- Aggressive sidewall for maximum traction when faced with technical terrains.
- Tread depth: 15 mm (0.59").

705402918 · 30X10R15

XPS Swamp Force



- Hybrid radial tire for mud and trail.
- 8-ply rated construction.
- Unique tread pattern allowing good grip in mud and mud ejection.
- Center tread provides for comfortable trail riding.
- Tread depth: 36-38 mm (1.41"-1.49").

705403201 · 30X9R14
705503387 · 30X11R14

XPS Swamp King



- Bias tires for mud and trail.
- 6-ply rated construction.
- Ultimate performance in mud without sacrificing good trail handling.
- Tread depth: 38 mm (1.49").

705403028 · 28X8X14
705503324 · 28X10X14

XPS Swamp King XL



- Bias ply for mud and trail
- 6-ply rated construction.
- Our best performing mud tire that does not compromise your trail riding
- Deep V grooved Lugs with extended shoulder tread for max traction in deep ruts that also help eject mud faster.
- Tread depth: 38 mm (1.49") center, max depth 52 mm (2.05").

705503687 · 30X9X14
705403381 · 30X10X14

LUBRICANT & OIL CHANGE KIT

Lubricant

XPS 4T 10W-50 Synthetic Oil

9779234 (US) · 1 qt / 946 ml
9779240 (Europe) · 1 qt / 946 ml

9779235 · 1 US gal / 3.785 L



- Engineered for heavy-duty and high-performance 4-stroke engines, including turbocharged, supercharged and racing engines.
- Formulated using carefully selected and strenuously tested base stocks and custom additives.
- Offers thick film strength to protect bearings, and a proven high-temp detergency to minimize deposits, prevent shear, provide thermal stability, and combat fuel dilution to ensure maximum performance from your engine.

XPS 4T 0W-40 Synthetic Oil

9779139 (US) · 1 qt / 946 ml
9779286 (Europe) · 1 qt / 946 ml

9779140 (US) · 1 US gal / 3.785 L
9779287 (Europe) · 1 US gal / 3.785 L



- Powersport formula with premium anti-wear and anti-corrosion additives.
- The best choice for high-performance snowmobile, ATV and SXS 4-stroke engines used in cold weather.
- Provides superior engine and transmission protection against heat, rust and corrosion.
- Delivers optimal performance in high and low temperatures.

XPS 4T 5W-40 Synthetic Oil

9779492 (US) · 1 qt / 946 ml
9779900 (Europe) · 1 qt / 946 ml

9779493 (US) · 1 US gal / 3.785 L
9779901 (Europe) · 1 US gal / 3.785 L



- Off-road formula with premium anti-wear and anti-corrosion additives.
- Designed for high-performance off-road, on-road and PWC 4-stroke engines, including turbo or supercharged powersports engines.
- Provides superior engine and transmission protection against rust and corrosion, even in extreme conditions.

Oil Change Kit

Engine Oil Change Kit

Models



- Ultra-convenient “all-in-one” Engine Oil Change Kit saves time and money.
- Includes XPS Synthetic or Synthetic Blend Oil, oil filter, O-rings and washer.

5W-40 Synthetic Oil / 450 cc or less	9779487 (US) 9779954 (Europe)
0W-40 Synthetic Oil / 450 cc or less	9779257 (US) 9779409 (Europe)
5W-40 Synthetic Oil / 500 cc or more V-twin engine	9779488 (US) 9779953 (Europe)
0W-40 Synthetic Oil / 500 cc or more V-twin engine	9779259 (US) 9779406 (Europe)
10W-50 Synthetic Oil / 500 cc or more V-twin engine	9779252 (US) 9779401 (Europe)
0W-40 Synthetic Oil / 650 ACE	9779481 (US) 9779417 (Europe)
5W-40 Synthetic Blend Oil / 650 ACE	9779480 (US) 9779952 (Europe)
5W-40 Synthetic Oil / 900 ACE	9779489 (US) 9779955 (Europe)
10W-50 Synthetic Oil / 900 ACE	9779261 (US) 9779411 (Europe)
5W-40 Synthetic Oil / 999T	9779500 (US) 9779959 (Europe)
10W-50 Synthetic Oil / 999T	9779501 (US) 9779960 (Europe)

MAINTENANCE PRODUCTS

Synthetic Gear Oil

75W-90
75W-140

9779158 (US) · 1 qt / 946 ml
9779212 (Europe) · 1 qt / 946 ml
9779160 (US) · 1 qt / 946 ml
9779215 (Europe) · 1 qt / 946 ml



- Uses custom additives to provide the best performance in Visco-Lok™ and Smart-Lok™ differentials.
- Allows higher loads, superior shear stability and reduced oxidation.
- Exceptional wear protection and superior performance at all operating temperatures.

XPS Synthetic DCT Fluid

9779710 (US) · 1 qt / 946 ml
9779473 (Europe) · 1 qt / 946 ml



- Meets or exceeds API GL-4 industry specifications.
- Formulated for dual clutch system.
- Enhanced cooling capabilities for optimal clutch functionality.
- Anti foaming agents for smooth hydraulic function.

Extended Life Pre-Mixed Coolant

9779150 · 1 qt / 946 ml
619590728 (Scandinavia) · 1 qt / 946 ml



- Antifreeze/coolant contains the correct dilution and the necessary additives to prevent corrosion and inhibit cavitation in BRP cooling systems.
- Long-life, 5-year formula specially formulated for BRP vehicles.
- Superior heat transfer.
- Ideal replacement for vehicles that normally use a 2-year antifreeze/coolant (green).
- 5 years (orange).

Anti-Corrosive Lubricant

9779701 · 120 oz / 340 g
619590733 (Scandinavia) · 120 oz / 340 g



- Multipurpose lubricant that can also be used to prevent rust, corrosion and moisture intrusion.
- It contains extreme pressure additives that work as an all-around lubricant for just about anywhere lubrication is needed.

Extreme Duty Suspension Grease

9779708 · 14 oz / 400 g



- Designed to work specifically with the components found in Can-Am vehicle suspensions.
- It is highly stable and offers optimal lubrication at both extreme cold and high temperatures while protecting suspension components from dirt and moisture, as well as corrosion under extreme washout conditions.

XPS Spine Grease

(Not illustrated)

9779704 (US) · 4 oz / 115 g
9779472 (Europe) · 4 oz / 115 g

- Enhanced rust and corrosion resistance.
- Protects against seizure, heat-freeze, galling, rust and corrosion.

DOT 4 Brake Fluid

9779151 (US) · 12 fl. oz. / 355 ml
9779207 (Europe) · 12 fl. oz. / 355 ml



- Meets or exceeds all DOT3 and DOT4 brake fluid requirements.
- High-temperature formula resists fade and also conditions seals and O-rings in braking system.

Racing Brake Fluid RS600

9779152 · 12 fl. oz. / 355 ml



- Exceeds DOT4 brake fluid requirements for extreme conditions and competition use.
- Extreme, 579-degree boiling point temperature is ideal for high-demand competition conditions to combat brake fade.
- Will not harm seals or braking system components.
- Should be added only to a clean/unfilled system to avoid dilution and diminished performance.
- Low-moisture formula slows water vapor absorption through multiple heat cycles.
- Recommended for use in Ski-Doo and Can-Am racing applications.

Fuel Stabilizer

9779171 (US) · 8 fl. oz. / 236 ml
9779183 (Europe) · 8 fl. oz. / 236 ml



- Ethanol-compatible and will stabilize fuel in your tank to keep it from breaking down and causing hard starting, throttle hesitation and poor run quality.
- Since ethanol attracts moisture, this product contains powerful anti-corrosion additives to protect fuel system components.
- Prevents problems associated with E10 fuels.



BRP REIMAGINES THE WAY YOU ACCESS YOUR WORLD

Can-Am is one of many success stories from BRP, the global company behind some of the most daringly innovative products and experiences that move you. Because it's not about the destination, it's about the journey — yours.

Discover our brands:

ski-doo **LYNX** **SEA-DOO** **can-am** **ROTAX** **ALUMACraft** **MANITOU** **QUINTREX**

www.brp.com





CANAMOFFROAD.COM

